

# Hudson

## Outdoor Pure Cube

### Assembly Instructions



#### Requirements:

2 People (recommended)  
 Rubber Mallet  
 Carpenters Level  
 Tape Measure  
 Cordless Drill  
 Phillips & Robertson Drill Bits  
 2" Hole Saw  
 Step Ladder  
 Sharp Knife  
 Jigsaw  
 Drill Bit set  
 Hex Key Set  
 Staple Gun  
 1 ¼" Staples  
 Grinder with Cut off Discs  
 ¼" Socket



[View the assembly process](#)



It is highly recommended to view the assembly video prior to starting assembly!

Manufactured by:



tel: 888-923-9813 | [info@leisurecraft.com](mailto:info@leisurecraft.com) | [web: www.leisurecraft.com](http://www.leisurecraft.com)



# Hudson Outdoor Pure Cube Assembly Instructions

**Please note that metal siding may have sharp edges!**

**It is recommended to wear personal protective including gloves and safety glasses while handling the metal siding!**



## Index

Base Preparation

Sauna Assembly

Electric Heater Installation

Wood Stove Installation (Chimney out the Side Wall)

Floor Model Electric Heater Installation

Care & Maintenance

Warranty

Manufactured by:



tel: 888-923-9813 | info@leisurecraft.com | web: www.leisurecraft.com

# Hudson

## Outdoor Pure Cube Assembly Instructions

### Sauna Base Preparation

Make sure the base for your sauna is level with a slight slope to the back for drainage.

A solid base for your sauna is recommended and can be made from any of the following.



Concrete Pad



Wood Deck



Crushed Stone



Patio Stone/Paver Blocks

It is recommended to build a base larger than required to provide a sitting area for cooling off during your sauna session.

Manufactured by:



tel: 888-923-9813 | [info@leisurecraft.com](mailto:info@leisurecraft.com) | web: [www.leisurecraft.com](http://www.leisurecraft.com)



# Hudson

## Outdoor Pure Cube Assembly Instructions

### Sauna Assembly



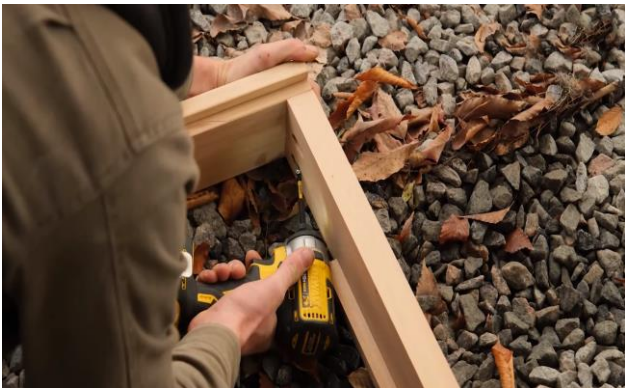
Start the assembly of your Sauna by laying out the front and back floor joists.

The front and back joists are the shorter ones with the notch facing upwards.



Place the 2 side joists on either side.

Ensure the insulation supports are at the bottom and facing inwards.



Ensure the side joists are flush to the front and back joists and secure them together with 2" (51mm) screws in the predrilled holes.

Repeat for all 4 corners.



Measure 18  $\frac{3}{4}$ " (48cm) from the side joist, which is the width of the insulation and secure one of the middle joists at both ends with 2" (51mm) screws.

The middle joist will have insulation supports on both sides.

Ensure the insulation supports are at the bottom.

Manufactured by:

# Hudson

## Outdoor Pure Cube Assembly Instructions

### Sauna Assembly



Repeat on the opposite side with another middle joist ensuring the insulation supports are at the bottom.



Repeat with 2 more joists in the middle.

These joists will have an insulation support on 1 side only, ensure they are at the bottom and facing towards the outside of the sauna opposite each other.



Place the foam insulation in between the floor joists.

You may need to trim the ends to make them fit.



Ensure the base is square.

Manufactured by:



# Hudson

## Outdoor Pure Cube Assembly Instructions



Temporarily place a floorboard in the middle of the base and secure at each end with a 1 ½" (38mm) screw.

This will prevent the joists from shifting as you finish the floor.

(This will be removed later)



Begin placing the floorboards starting at the front of the sauna with the flat side of the floorboard tight into the notch of the front joist.

Secure each end with a 1 ½" (38mm) screw at each end and finishing nails or 1 ¼" (32mm) staples through the tongue into the middle joists.



Continue to add the floorboards tapping tightly into each other.

When you reach the middle floorboard, Remove it and then continue placing the floorboards until you reach the rear of the sauna.



Once you get to 50" (127cm) from the rear of the sauna, you can place a screw in the face of the floorboards where each of the joists are as they will be hidden by the benches and will not be seen.

Manufactured by:

# Hudson

## Outdoor Pure Cube Assembly Instructions



Finish the floor by adding the small finisher piece to the last full-size floorboard and tap both together, then secure with 1 ½" (38mm) screws.



Place one of the 30" (76cm) wall panels onto the back corner of the base with the siding facing inwards and ensure it is flush with the outer edge.

Secure to the base with 3 – 3 ½" (89mm) screws.



Place a 25 ¾" (65cm) double side wall panel onto the back of the sauna and ensure it is flush to the base and the side wall panel.

(Double sided wall panels have 1 x 4 tongue & groove cedar on both sides)



Once the panel is in the correct placement, secure the panel at the end into the sauna base using a 3 ½" (89mm) screw.

Manufactured by:



# Hudson

## Outdoor Pure Cube Assembly Instructions



Use 5 - 2 ½" (64mm) screws through the side wall panel into the back wall panel to secure the 2 panels together.



Now place a single sided 25 ¾" (65cm) panel onto the back and ensure it is flush to the front.

This will leave a "gap" at the back that will be covered with siding in a later step.



Secure with 7 - 3 ½" (89mm) screws. (2 in the bottom and 5 through the side into the other back panel)



Place another 25 ¾" (65cm) double sided panel next to the middle panel and ensure it is flush at the front.

Secure with 5 - 3 ½" (89mm) screws through the side into the middle back panel.

Manufactured by:



# Hudson

## Outdoor Pure Cube Assembly Instructions



Place one of the 30" (76cm) wall panels onto the other side of the sauna with the siding facing inwards and ensure it is flush with the back and side edges.

Secure to the base and back wall panel with 10 - 3 ½" (89mm) screws.



Place the metal trim piece centered on the back wall of the sauna.

Note: Small gap under the peak panel to face the rear of the sauna.



Place the rear peak panel onto the back wall of the sauna by sliding the gap of the rear panel onto the metal piece.



Note for the roof assembly, there are 2 different brackets.

Brackets labelled "T" are for the top.  
Brackets labelled "S" are for the sides.

Manufactured by:

# Hudson

## Outdoor Pure Cube Assembly Instructions



Insert one of the "T" brackets into the top of a 30" (76cm) roof panel and secure using 6- 1 ½" (38mm) screws.

Repeat on the other side of the roof panel.



Insert another roof panel onto the other side of the "T" brackets and secure.



Insert 2 of the "S" brackets into the bottom of one side of the roof panel assembly and secure with 6 – 1 ½" (38mm) screws per bracket.

Repeat on the opposite roof panel.



Insert the assembly into the slots on the wall panels.

Manufactured by:



# Hudson

## Outdoor Pure Cube Assembly Instructions



Place a wide panel on the side of the sauna ensuring it is flush on the inside.

Secure it to the previous panel with 3 – 3 ½" (89mm) screws into the floor and 7 – 2 ½" (64mm) screws into the other wall panel.

Repeat on the other side of the sauna.



Assemble another 30" (76cm) roof assembly in the same process as the other.

2 roof panels, 2 "T" Brackets, 4 "S" brackets and secure with 48 - 1 ½" (38mm) screws.



Insert the assembly into the slots on the wall panels and secure to the wall panels the same way as in the previous steps.



Place the remaining 2 - 30" (76cm) wall panels next to the middle wall panels and secure with 3 – 3 ½" (89mm) screws into the floor and 7 – 2 ½" (64mm) screws into the middle wall panel.

Manufactured by:

# Hudson

## Outdoor Pure Cube Assembly Instructions



Place the first glass panel flush to the front of the sauna wall.



Use a 5/32" drill bit to predrill holes into the wall panels and then secure the glass panel to the wall in the predrilled holes using the 4 connector lag screws.



Repeat the process for the other glass panel on the other side of the sauna.



Place glass door panel between the 2 glass panels and ensure it is flush.

Ensure the hinges are on the outside and it opens in your preferred direction.

Use the pre drilled holes on the glass panels to pre-drill 5/32" holes into the door panel and then secure the glass panels to the door using the 4 connector lag screws.

Manufactured by:



# Hudson

## Outdoor Pure Cube Assembly Instructions



Ensure the front wall panels are straight and then secure to the floor with 2 - 2 ½" (64mm) screws in each panel.



Place the front peak panel onto the top of the front wall.

Ensure it is perfectly centered on either end and the frame is flush to the front wall. (tongue & groove should extend past front wall) and the bigger gap between the siding and 2 x 4 is on the inside.



Once centered, Secure it to the wall using 2 - 3 ½" (89mm) screws in each end.

**Be very careful that the screws don't hit the glass as this will cause the glass to shatter.**



Secure the door panel to the roof panel using 3 - 3 ½" (89mm) screws.

Manufactured by:

# Hudson

## Outdoor Pure Cube Assembly Instructions



Assemble the remaining 30" (76cm) roof panels in the same process as the other 2 roof panels,



Insert the assembled roof assembly into the next set of side wall panels.



Place a 25 3/4" (65cm) panel next to the front wall.

Secure with 3 – 3 1/2" (89mm) screws into the floor and 7 – 2 1/2" (64mm) screws into the other wall panel.

Repeat on opposite side.



Assemble the final roof panels in the same manner as the previous ones, except using the 25 3/4" (65cm) panels.

Manufactured by:



# Hudson

## Outdoor Pure Cube Assembly Instructions



Insert the assembled roof assembly into the narrow set of side wall panels.



Secure the rear roof panel to the roof peak section with 3 – 2 ½" (64mm) screws.

Repeat on the opposite side.



Secure the top and side of the brackets to the wall panels using 1 ½" (38mm) screws.



Screw the roof panels together using 2 – 2 ½" (64mm) screws per roof panel.

Continue this process for the remaining roof panels.

Manufactured by:

# Hudson

## Outdoor Pure Cube Assembly Instructions



Place the first peak fascia onto the front of the sauna.



Ensure it sticks up 1 ¼" (32mm) higher than the roof.

Secure it with 3 – 2 ½" (64mm) screws from the inside of the roof panel for a cleaner look.



Repeat with the other front roof fascia trim.



Line up the wall trim to the roof fascia and secure with 4 – 2 ½" (64mm) screws from the backside of the wall panel.

Repeat on the opposite side of the front of the sauna.

Repeat the above steps for the rear of the sauna.

Manufactured by:



# Hudson

## Outdoor Pure Cube Assembly Instructions



Place the first peak fascia onto the front of the sauna.



Ensure it sticks up 1 ¼" (32mm) higher than the roof.

Secure it with 3 – 2 ½" (64mm) screws from the inside of the roof panel for a cleaner look.



Repeat with the other front roof fascia trim.



Line up the wall trim to the roof fascia and secure with 4 – 2 ½" (64mm) screws from the backside of the wall panel.

Repeat on the opposite side of the front of the sauna.

Repeat the above steps for the rear of the sauna.

Manufactured by:

# Hudson

## Outdoor Pure Cube Assembly Instructions



Use the triangle insulation pieces to fill the gaps between the roof panels and the wall panels on both sides.

You will need to cut to fit in between each section.



Repeat the above process to cut the triangle insulation pieces at the peak of the sauna to fill the gaps between the roof panels



Place the square insulation blocks into the roof panels.

The narrower ones will go into the front 2 panels.



Place the top fascia trim pieces on the front and back of the same side of the sauna and secure with 3 of the provided black screws.

Repeat the above steps for the other side of the sauna.



Manufactured by:



# Hudson

## Outdoor Pure Cube Assembly Instructions



Place the ridge cap at the peak of the sauna and secure with 3 of the provided black screws on each side.



Place a side trim piece between the fascia trim pieces.  
Secure with 6 of the included black screws.  
Repeat on opposite side.



Place the first metal shingle on one end of the roof and secure with 4 screws.



Continue to add the metal shingles ensuring they are locked into the previous panel and secure with 3 of the provided screws in the cut-out slots.

Manufactured by:

# Hudson

## Outdoor Pure Cube Assembly Instructions

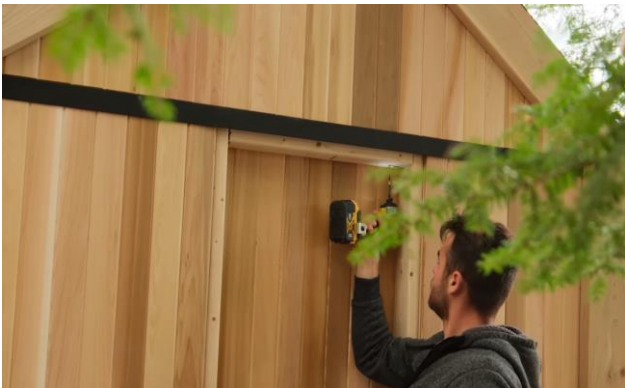


The final panel will be a thin finisher panel.

Repeat for the opposite side of the sauna.



Insert the insulation blocks into the wall panels on both sides.



Place the short 2 x 4 into the top of the open panel on the back of the sauna and secure with 3 – 2 ½" (64mm) screws.



Insert the insulation blocks into open panel on the back wall of the sauna.

You may need to trim the insulation to make it fit.

Manufactured by:



# Hudson

## Outdoor Pure Cube Assembly Instructions



Place the side trim pieces onto the side fascia and secure with 3 of the provided black screws.

Ensure to slide the trim under the side trim at the top of the wall.

Repeat for all 4 corners.



Install the bottom trim piece.

Use a siding panel to determine the correct height and then secure with 3 screws centered the length of the sauna.

Repeat on the opposite side of the sauna.



Starting at the front of the sauna, start placing the side wall panels in the same manner as the roof panels.

Secure with 3 black screws in the cut-out slots ensuring each panel locks into the previous panel.



When you reach the 8<sup>th</sup> panel, Install the panel with the vent hole cut-out on the bottom.

Manufactured by:

# Hudson

## Outdoor Pure Cube Assembly Instructions



The final panel will be a thin finisher panel.



Repeat on the opposite side of the sauna except the vent hole will be to the top of the second panel from the rear of the sauna.



Now close off the open wall panel on the back of the sauna with the T&G wall staves and secure with finishing nails or 1 ¼" (32mm) staples.



You will need to measure the gap for the last piece and cut one of the pieces of siding to fit.

Manufactured by:



# Hudson

## Outdoor Pure Cube Assembly Instructions



Install the door handle by placing the provided 2" (50mm) lag screws through the inner handle (short) into the outer handle (longer)

Use the hex key to snug up, do not tighten all the way.



Ensure the outer handle lines up with the magnetic catch on the door frame and then tighten the lag screws completely.



To start the assembly of the benches, Bring in the top bench and place it with the curved front facing upwards.

Secure each of the bench supports flush to the back of the bench with the bottom seat facing up and secure with 2 – 2 ½" (64mm) screws per support.



Repeat the process with the lower bench.

Manufactured by:

# Hudson

## Outdoor Pure Cube Assembly Instructions



Flip the bench assembly upright and place the assembled bench into the back of the sauna.



Ensure the bench is tight to the back wall and secure with 2 - 2 ½" screws in the back support and the floor support of each bracket.



Put the upper bench enclosure in place and secure with 2 - 2 ½" (64mm) screws into each support.

Screw between the slats of the support to hide the screws.

Repeat for the bottom bench enclosure.



Place the backrest 8" (20cm) above the bench and secure with 2 ½" (64mm) screws into each support.

Screw between the slats of the support to hide the screws.

Manufactured by:



# Hudson

## Outdoor Pure Cube Assembly Instructions



Place the trim piece over the seam on the top of the front wall and secure with 1 ¼" (32mm) staples or finishing nails.



Install the crown moulding trim with finishing nails or 1 ¼" (32mm) staples on the seams of the sauna where the roof panels meet, inside and out of the sauna.



Install the crown moulding trim with finishing nails or 1 ¼" (32mm) staples on the seams of the sauna where the roof meets the side walls, inside and out of the sauna.

You may need to cut to fit.



Place the thin trim where the roof and back wall meet.

Cut it to fit and secure with finishing nails or 1 ¼" (32mm) staples.

Repeat on other side and for the front of sauna.

Manufactured by:

# Hudson

## Outdoor Pure Cube Assembly Instructions



Place the trim piece over the seam on the top of the back wall and secure with 1 ¼" (32mm) staples or finishing nails.



Place the thin trim in the corners of the front wall.

Cut it to fit and secure with finishing nails or 1 ¼" (32mm) staples.



Place the thin trim in the corners of the back wall and between the backrest and the bench.

Cut it to fit and secure with finishing nails or 1 ¼" (32mm) staples.



Add the trim in the same manner for the outside of the sauna.

Manufactured by:



# Hudson

## Outdoor Pure Cube Assembly Instructions



Using a utility knife, remove the insulation from the lower vent hole.



Drill a 2" (51mm) hole in the center of the cut out.

Only drill have way to prevent splintering on the inside of the sauna.

Finish drilling the hole from the inside for a cleaner look.



Install the vent and secure with the provided screws.



Repeat this process for the upper vent hole.

Manufactured by:

# Hudson

## Outdoor Pure Cube Assembly Instructions



Place the bottom vent support bracket and cedar slider over the lower vent hole.

Ensure it is level and secure with 3 – 2" (51mm) screws.



Place the cedar slider cover onto the bottom support then put the top vent support on top, ensure that the cover can slide back and forth.

Secure with 3 – 1 ½" (38mm) screws.



Use a 1 ½" (38mm) screw to hang the optional thermometer in the desired location.



Use 2 - 1 ½" (38mm) screws to hang the optional cedar sauna shelf in the desired location.

Manufactured by:



# Hudson

## Outdoor Pure Cube Assembly Instructions

### Electric Heater Installation (Optional)



Measure the width of the stove mounting holes.



Measure the height of the mounting holes and add 6". (152mm)



Transfer these measurements to the outside of the sauna wall where the heater will be placed.

Secure one of the supports into the panel frame on both sides with 2 – 3 ½" (89mm) screws in each end.



Remove the shield and chimney and secure the support with 2 – 3 ½" (89mm) screws in each end.

Manufactured by:

# Hudson

## Outdoor Pure Cube Assembly Instructions

### Electric Heater Installation (Optional)



Transfer the measurements to the side wall of sauna where the support was placed in the last step.

Ensure the heater will be centered between the benches.



Hang the heater on the 2 screws and tighten to secure stove in position.



Locate the pieces for your heater guard.

Stand the 2 Assembled side pieces of the heater guard on edge with pre-drilled holes on the bottom.



Screw heater guard support to either side using (2) – 1 ½" (38mm) screws per side.

Repeat for the bottom heater guard support.

Manufactured by:



# Hudson

## Outdoor Pure Cube Assembly Instructions

### Electric Heater Installation (Optional)



Place 2- 2 ½" (64mm) screws into the pre-drilled holes on either side of heater guard to prepare for mounting.



Center the guard around the heater and secure to wall with the pre placed screws.

Ensure the guard is level and secure the other side.



Wash the layer of rock dust off of the sauna rocks before using them.

When your sauna is set up and working you should "break-in" the sauna before using it for the first time by turning on the heater to its highest setting and operate it for about 1 hour.

This is recommended to burn off any oils impurities from manufacturing, and it also "cures" the woodwork.

- *All wiring should be installed according to the heater manufacturers instructions and by a licensed electrician.*

- **Do NOT use a G.F.I breaker**

Manufactured by:

# Hudson

## Outdoor Pure Cube Assembly Instructions

### Wood Stove Installation (Chimney out the back wall) (Optional)



Remove all protective film from stainless steel parts and the plastic wrap from stove pipe pieces before installation.



Fasten the stove handle onto the stove door With the screws provided.



Remove the screw on the back of stove and remove the back flap.



Measure the center of the chimney hole, in this case it is 22" (56cm)

Manufactured by:



# Hudson

## Outdoor Pure Cube Assembly Instructions

### Wood Stove Installation (Chimney out the back wall) (Optional)



Measure 12" (30cm) from the front wall and 22" (56cm) up from the floor and mark it on the wall of the side you want the heater installed.



Drill a hole on the mark big enough to fit your jigsaw blade.



Mark 4" (10cm) from the center of the hole in all 4 directions.



Place your chimney on the 4 marks and trace out a circle.

Manufactured by:

# Hudson

## Outdoor Pure Cube Assembly Instructions

### Wood Stove Installation (Chimney out the back wall) (Optional)



Cut out the circle with a jigsaw.



Insert the chimney "T section" through the hole from the outside and then place the heat shield over it.



Secure the heat shield to the wall using 6- 1 ½" (38mm) screws in the provided holes.



Place the floor heat shield centered to the wall shield.

Manufactured by:



# Hudson

## Outdoor Pure Cube Assembly Instructions

### Wood Stove Installation (Chimney out the back wall) (Optional)



Place the stove on the floor shield then slide the chimney stove into the hole on the back of the stove into the opening.



From the outside of the sauna, slide the chimney piece out and then put it through the exterior heat shield and then back into hole in the rear of the stove.



Level the exterior shield and mark on the outer studs where the mounting holes will be.



Remove the shield and chimney and secure the support with 2 – 3 ½" (89mm) screws in each end.

Manufactured by:

# Hudson

## Outdoor Pure Cube Assembly Instructions

### Wood Stove Installation (Chimney out the back wall) (Optional)



Measure the bottom mounting holes on the heat shield in relation to the top holes.



Transfer that measurement to the wall and secure another support in the same manner as the top support.



Place the heat shield and chimney back into position and secure in the corners with 4 of the provided screws.



Attached assemble chimney pieces to the "T" coming out the back of the sauna and secure with a support band.

Manufactured by:



# Hudson

## Outdoor Pure Cube Assembly Instructions



Mount the chimney support bracket to the top of the wall with the provided screws.



Fasten the bottom of the heat shield with 4 of the provided screws.



Attach the support strap to the chimney support and tighten bolts on both sides.

Install the Chimney cap on top of the Chimney pipes.

Manufactured by:

# Hudson

## Outdoor Pure Cube Assembly Instructions

### Floor Model Electric Heater Installation

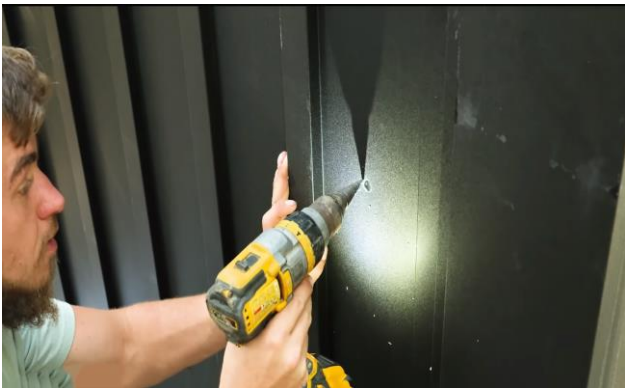


To start the installation of the floor model heater, drill a ½" (13mm) hole beside the door at the desired height where the control panel will be mounted.

Drill the hole halfway through and finish from the inside of the sauna for a cleaner look.



Secure the control panel housing over the hole with the provided screws ensuring it is level.



Drill a hole in the center of the 1st piece of metal siding on the back corner of the sauna to fit the plug for the wires.

This should be under the top bench to hide the wires coming into the sauna. ( Approx. 28"- 30" (71-76cm) from the ground)



Remove the piece of metal siding to finish drilling the hole through the sauna wall.

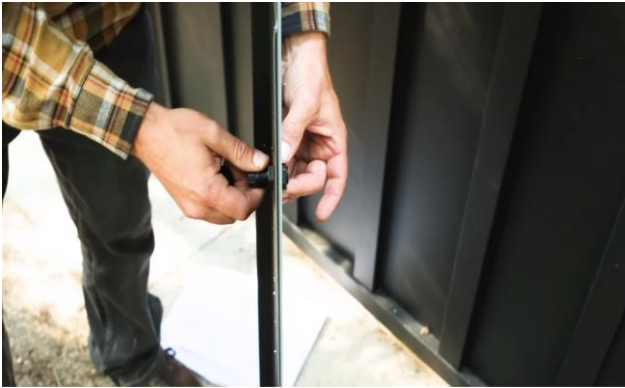
Manufactured by:



# Hudson

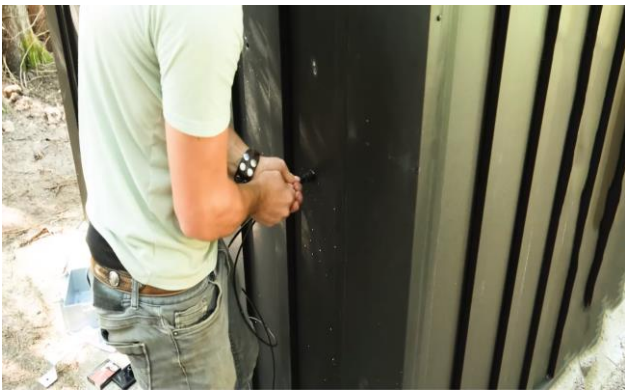
## Outdoor Pure Cube Assembly Instructions

### Floor Model Electric Heater Installation



With the piece of metal siding removed, insert the plug through the hole and tighten with the plastic nut on the back of the siding.

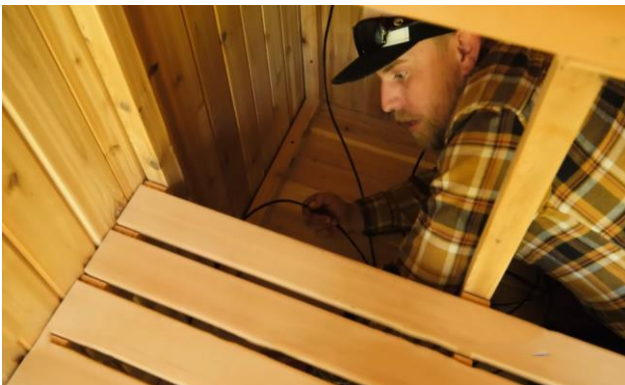
Reinstall the metal siding piece.



Feed the 2 wires through the plug, leaving a couple feed for the electrician to finish the hook up.



Install the lock cap over the wires and snug up onto the plug.



On the inside of the sauna, slide the wires along the wall under the lower bench and front enclosure to the front of the sauna where the heater and control panel will be located.

Manufactured by:

# Hudson

## Outdoor Pure Cube Assembly Instructions

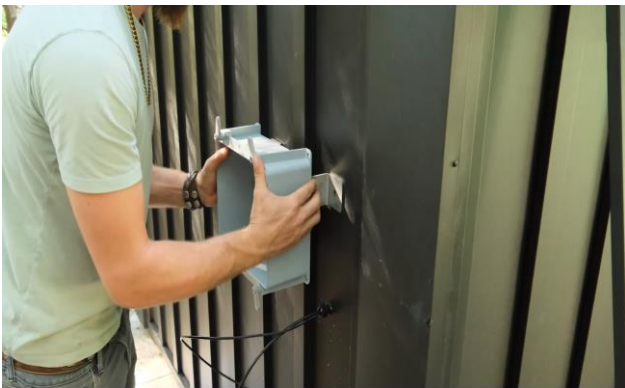
### Floor Model Electric Heater Installation



Place the support bracket for the electrical box and drill out the mounting holes.

Ensure it is level and aligned with the stud in the wall.

Do not fasten the box at this point.



Position the electrical box on the bracket in your desired position.



Flip over the box and bracket and drill out the mounting holes from the bracket into the electrical box.

Secure with the provided bolt & nuts.



Mount the assembly to the wall with the provided lag screws.

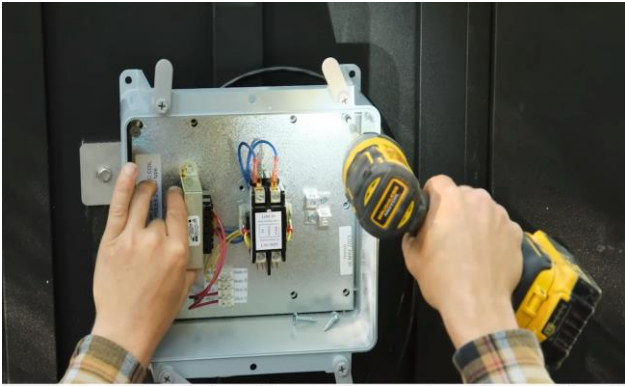
Manufactured by:



# Hudson

## Outdoor Pure Cube Assembly Instructions

### Floor Model Electric Heater Installation



Secure the electrical components in the box and place on the cover.

Leave the final wiring for a licenced electrician to complete.



Place the upper bench enclosure in place and secure with 2 - 1 ½" (38mm) screws into each support.

Screw between the slats of the support to make the screws less visible.



Measure the length of the wall beside the door and cut one of the wire cover trim pieces on a 45° angle at that measurement.



Measure the distance from the front of the lower bench to the trim piece and cut the other wire cover trim piece on a 45° angle at the measurement.

Manufactured by:

# Hudson

## Outdoor Pure Cube Assembly Instructions

### Floor Model Electric Heater Installation



Place the wires into the groove of the trim.

Fasten the trim using 1 ¼" (32mm) staples or finishing nails being careful not to hit the wires inside the trim.



Feed the 4-wire bundle through the hole in the wall & control panel housing.



Place the 4-wire bundle into the groove of the wall trim and the 2-wire bundle out the bottom.

Leave the 2-wire bundle for a qualified electrician to connect to the heater.

Fasten the wall trim using 1 ½" (38mm) screws being careful not to hit the wires inside the trim.



Install the temperature sensor on the wall above the heater 2 ½" (64mm) down from the roof trim with the provided 1" (25mm) screw.

Manufactured by:



# Hudson

## Outdoor Pure Cube Assembly Instructions

### Floor Model Electric Heater Installation



Remove the protective film from the temperature sensor cover and install over the sensor with 4 of the provided 1" (25mm) screws.

The 2 wires will need to be connected to the control panel by a qualified electrician.



Secure the control panel to the housing block with the provided screws.

Leave the wires for a licensed or qualified electrician to connect.



Remove the protective film from the heater.



Place the heater in the desired location.

It must be a minimum of 3 ½" (89mm) away from all walls.

Manufactured by:



# Hudson

## Outdoor Pure Cube Assembly Instructions

### Floor Model Electric Heater Installation



Secure the provided “feet” to the floor with the provided 1” (25mm) screws by sliding them under the heater and then pulling them back tight to the inside.



Fill the heater with rocks.

Ensure that there is sufficient airflow between the rocks to allow heat to escape the air-flow system avoiding unwanted high-limit issues.

Rocks should be rinsed before use in order to avoid odour and dust.

Sauna rocks should be reviewed after 12 months of use. Removing worn or broken stones and replacing with new sauna stones

Larger rocks should be placed on the bottom of the heater while saving the smaller rocks for the top 9 inches of the heater

Rocks should be placed until they sit to the top of the heater ensuring that the element protector is fully covered or encased with rocks.

Manufactured by:

## MAINTAINING YOUR SAUNA AFTER INSTALLATION

### Interior

It is recommended to vacuum or sweep out the inside of your sauna frequently to remove dirt and other debris.

Under normal conditions, a slight wash of the floor and benches with warm soapy water several times a year will maintain its cleanliness. You can use a sheet of fine grit sandpaper or a low pressure wash to remove more stubborn stains or for a deeper cleaning of the interior of your sauna.

**Never use ammonia or harsh cleaners as they can turn the wood gray.**

### Exterior

Depending on the humidity and weather conditions in your area, the cedar will either shrink or expand based on the amount of moisture absorption. The desired effect is to have the cedar expand into the bands therefore making the sauna staves much tighter.

Over time the lumber will weather naturally as a result of sun and rain, it will change into a weathered grey colour. This natural weathering will not harm the wood or impair the sauna's performance.

If you wish to retain the natural color of your Dundalk Leisurecraft Sauna, there are many cedar stains on the market and almost as many opinions as to which is best.

We encourage you to rely on your own research and referrals.

Recommended Stains Include:

Behr Premium Semi-Transparent Waterproofing Stain & Sealer

Sikkens Proluxe Cetol SRD Translucent Stain

<https://www.realcedar.com/outdoor/finishing-choices/>

**Note: never treat the interior of the Sauna, and never apply paint or varnish to the exterior.**



### *Water Seepage*

Some minor water seeping into the sauna is expected and normal for an outdoor sauna.

If your sauna is properly installed, you should not have water dripping in but you should expect some water seepage, especially on the top and sides of the sauna.

This is due to the porous characteristics of the wood and to the ball-and-socket profile design of the staves. Water Seepage will not harm the sauna. The moisture will evaporate once you turn on the heater and the sauna heats up.

If the water marks are bothersome, they can be easily removed with a light sanding (80 or 100 grit)



**HOW TO TAKE A SAUNA**

- 1. Pre-heat your sauna to the desired temperature (usually between 80-100°C)
- 2. While it's warming up, take a nice hot shower.
- 3. Enter the pre-heated sauna, relax and allow your body to perspire in the soft dry heat. Do not throw water on the rocks during the first part of the session.
- 4. Cool off with a cold shower or a quick swim in a lake or pool.
- 5. Re-enter the sauna and sprinkle water on the rocks. This will increase humidity to assist in perspiration. Half a cup every 5 minutes should be enough. Too much water will just cool off the rocks and you'll get less steam.
- 6. After a 20-30 minute sauna, cool off in the shower or lake or pool.
- 7. Repeat this sauna/cold shower process as often as desired.
- 8. After each use, leave the door fully open for a few hours if possible so the wood can dry out.

**These are guidelines only. Enjoy your sauna in whichever way you desire.  
Children must be supervised by an adult.**

**WARRANTY**

LeisureCraft warrants our saunas against defects in materials and workmanship under normal/residential use for a period of five (5) years, as applicable, from the date of receipt of the product by the original end-user consumer. This warranty does not apply to normal wear and tear and/or natural weather conditions. This warranty does not cover regular required maintenance of the sauna, (eg. Tightening bands on the barrels, cleaning or staining the sauna) refer to your sauna assembly manual for maintenance guidelines. This warranty does not cover misuse or negligence and the manufacturer and associated retailers are not liable for any injury or damage caused by the product. This warranty is a parts only warranty and any service or labor costs would not be considered as part of the 5 year warranty.

Purchaser Name: \_\_\_\_\_ Date: \_\_\_\_\_

Purchased From: \_\_\_\_\_

Manufactured by:



tel: 888-923-9813 | info@leisurecraft.com | web: [www.leisurecraft.com](http://www.leisurecraft.com)