

Hudson

Outdoor Pure Cube

Assembly Instructions



Requirements:

- 2 People (recommended)
- Rubber Mallet
- Tape Measure
- Cordless Drill
- Phillips & Robertson Drill Bits
- Hex Key Set
- Staple Gun
- 1 ¼" Staples
- Step Ladder
- Grinder with Cut off Discs
- ¼" Socket
- Jigsaw
- Drill Bit set
- Sharp Knife

It is highly recommended to view the assembly video prior to starting assembly!

[View the assembly process](#) 

Manufactured by:

Hudson

Outdoor Pure Cube Assembly Instructions

Sauna Base Preparation

Make sure the base for your sauna is level with a slight slope to the back for drainage.

A solid base for your sauna is recommended and can be made from any of the following.



Concrete Pad



Wood Deck



Crushed Stone



Patio Stone/Paver Blocks

It is recommended to build a base larger than required to provide a sitting area for cooling off during your sauna session.

Manufactured by:



tel: 888-923-9813 | info@leisurecraft.com | web: www.leisurecraft.com

Hudson

Outdoor Pure Cube Assembly Instructions

Sauna Assembly



Start the assembly of your Sauna by laying out the front and back floor joists and 2 of the middle floor joists.

The front and back joists are the shorter ones with the notch facing upwards.



Ensure the middle joists are flush to the front and back joists and secure them together with 1 ½" (38mm) screws in the pre drilled holes.

Repeat for all 4 corners.



Center the remaining 3 middle joists 21" (53cm) apart and secure with 1 ½" (38mm) screws at both ends of each joist.



Begin placing the floor boards with the groove towards the front of the sauna and secure with 2 1 ½" (38mm) screw at each end.

Do not place screws in every support, just the end supports!

Continue adding the floor boards with the tongue going into the grooves securing at either end.

A rubber mallet may be used to gently tap the boards tightly together.

Manufactured by:



tel: 888-923-9813 | info@leisurecraft.com | [web: www.leisurecraft.com](http://www.leisurecraft.com)

Hudson

Outdoor Pure Cube Assembly Instructions



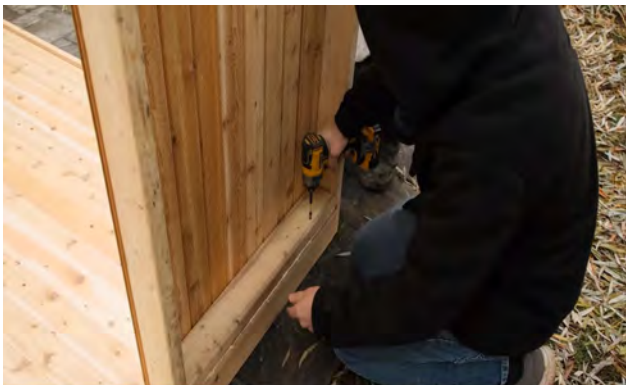
It may be helpful to place one floor board in the middle of the base to keep the frame square as you are adding more floor boards.
(This will be removed later)



Once you get to 50" (127cm) from the rear of the sauna, place a screw in the floor boards where each of the joists are as they will be hidden by the benches.



Continue to add the floor boards until you reach the rear of the sauna base.



Place one of the 30" (76cm) wall panels onto the back corner of the base with the siding facing inwards and ensure it is flush with the outer edge.

Secure to the base with 3 - 3 1/2" (89mm) screws.

Manufactured by:



tel: 888-923-9813 | info@leisurecraft.com | web: www.leisurecraft.com

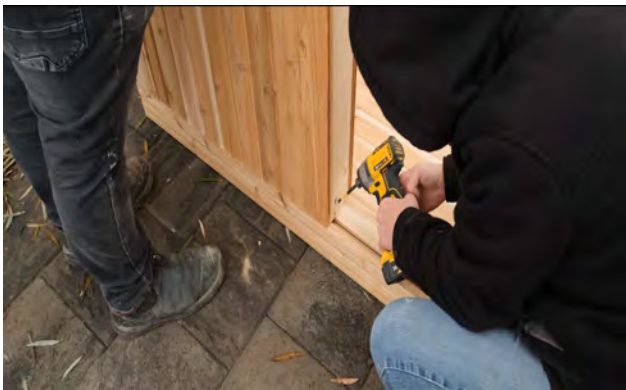
Hudson

Outdoor Pure Cube Assembly Instructions



Place a 25 $\frac{3}{4}$ " (65cm) double side wall panel onto the back of the sauna and ensure it is flush to the base and the side wall panel.

(double sided wall panels have 1 x 4 tongue & groove cedar on both sides)



Once the panel is in the correct placement, secure the panel at the end in to the sauna base using a 3 $\frac{1}{2}$ " (89mm) screw.



Use 5 - 3 $\frac{1}{2}$ " (89mm) screws through the side wall panel into the back wall panel to secure the 2 panels together.



Now place a single sided 25 $\frac{3}{4}$ " (65cm) panel onto the back and ensure it is flush to the front.

This will leave a "gap" at the back.

This will be covered with siding in a later step.

Manufactured by:



tel: 888-923-9813 | info@leisurecraft.com | web: www.leisurecraft.com

Hudson

Outdoor Pure Cube Assembly Instructions



Secure with 7 - 3 ½" (89mm) screws. (2 in the bottom and 5 through the side into the other back panel)



Place another 25 ¾" (65cm) double sided panel next to the middle panel and ensure it is flush at the front.

Secure with 5 - 3 ½" (89mm) screws through the side into the middle back panel.



Place another one of the 30" (76cm) wall panels onto the back corner of the base with the siding facing inwards and ensure it is flush with the outer edge.

Secure to the base and back wall panel with 10 - 3 ½" (89mm) screws.



Place the rear peak panel onto the back wall of the sauna.

Note: Small gap under the peak panel to face the rear of the sauna.

Manufactured by:



tel: 888-923-9813 | info@leisurecraft.com | web: www.leisurecraft.com

Hudson

Outdoor Pure Cube Assembly Instructions



Slide the rear metal trim piece into the small gap on the bottom of the peak panel.



Ensure the trim piece and the peak panel are flush to the back wall.



Measure out the peak panel to ensure it is centered on each end and then fasten it to the back wall with 3 – 3 ½" (89mm) screws on each end.



Ensure the inside of the back wall is flush with the peak panel.

Manufactured by:



tel: 888-923-9813 | info@leisurecraft.com | web: www.leisurecraft.com

Hudson

Outdoor Pure Cube Assembly Instructions



Secure the back wall to the roof panel through the middle back panel using 3 - 3 ½" (89mm) screws.



Note for the roof assembly, there are 2 different brackets.

Brackets labelled "T" are for the top.
Brackets labelled "S" are for the sides.



Insert one of the "T" brackets into the top of a 30" (76cm) roof panel and secure using 6- 1 ½" (38mm) screws.

Repeat on the other side of the roof panel.



Insert another roof panel onto the other side of the "T" brackets and secure.

Manufactured by:



tel: 888-923-9813 | info@leisurecraft.com | web: www.leisurecraft.com

Hudson

Outdoor Pure Cube Assembly Instructions



Insert 2 of the "S" brackets into the bottom of one side of the roof panel assembly and secure with 6 - 1 ½" (38mm) screws per bracket.

Repeat on the opposite roof panel.



Insert the assembly into the slots on the wall panels.



Secure the assembly to the walls using 12 - 1 ½" (38mm) screws per panel.

Repeat on the other side.



Place a 30" (76cm) panel next to the first panel and secure with 3 - 3 ½" (89mm) screws into the floor and 7 - 2 ½" (64mm) screws into the other wall panel.

Repeat on the other side.

Manufactured by:



tel: 888-923-9813 | info@leisurecraft.com | web: www.leisurecraft.com

Hudson

Outdoor Pure Cube Assembly Instructions



Assemble another 30" (76cm) roof assembly in the same process as the other. 2 roof panels, 2 "T" Brackets, 4 "S" brackets and 48 1 ½" (38mm) screws.



Insert the assembly into the slots on the wall panels and secure to the wall panels the same way as in the previous steps.

Screw the roof panels together using 2 - 2 ½" (64mm) screws per roof panel.



Place the remaining 2 - 30" (76cm) wall panels next to the middle wall panels and secure with 3 - 3 ½" (89mm) screws into the floor and 7 - 2 ½" (64mm) screws into the other wall panel.



To start the assembly of the benches, place the back of the top bench on a flat surface.

Place one of the supports flush to the back of the bench with the bottom seat facing up and secure with 2 - 2 ½" (64mm) screws per support.

Repeat with the remaining supports.

Manufactured by:



tel: 888-923-9813 | info@leisurecraft.com | web: www.leisurecraft.com

Hudson

Outdoor Pure Cube Assembly Instructions



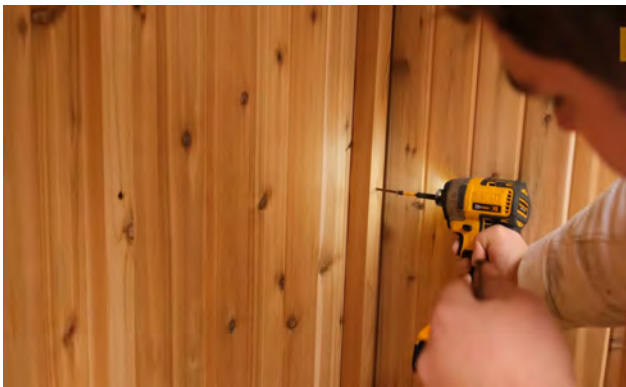
Repeat the process with the lower bench.



Place the lower front enclosure onto the front of the supports and secure it from the underneath using 2 – 2 ½" (64mm) screws per bracket.



Flip the bench assembly upright and place the assembled bench into the back of the sauna.



Ensure the bench is tight to the back wall and secure with a 2 ½" screw in the back support and the floor support on each bracket.

Manufactured by:



tel: 888-923-9813 | info@leisurecraft.com | web: www.leisurecraft.com

Hudson

Outdoor Pure Cube Assembly Instructions



Place the upper bench enclosure in place and secure with 2 - 2 ½" (64mm) screws into each support.

Screw between the slats of the support to hide the screws.

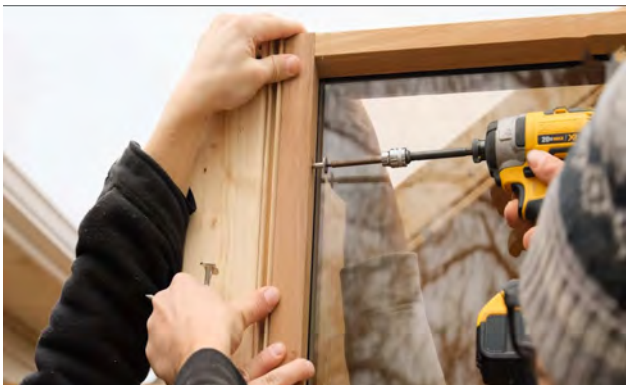


Place the backrest 8" (20cm) above the bench and secure with 2 ½" (64mm) screws into each support.

Screw between the slats of the support to hide the screws.



Place the first glass panel flush to the front of the sauna wall.



Secure it to the wall in the pre drilled holes using the 4 connector lag screws.

Manufactured by:



tel: 888-923-9813 | info@leisurecraft.com | web: www.leisurecraft.com

Hudson

Outdoor Pure Cube Assembly Instructions



Place glass door panel next to the first wall panel and secure the panels using the 4 connector lag screws into the pre drilled holes.



Repeat the above steps for the last glass panel.



Place the front peak panel onto the top of the front wall.

Ensure it is perfectly centered on either end and the frame is flush to the front wall. (tongue & groove should extend past front wall)



Once centered, Secure it to the wall using 2 – 3 ½" (89mm) screws in each end.

Be very careful that the screws don't hit the glass as this will cause the glass to shatter.

Manufactured by:



tel: 888-923-9813 | info@leisurecraft.com | web: www.leisurecraft.com

Hudson

Outdoor Pure Cube Assembly Instructions



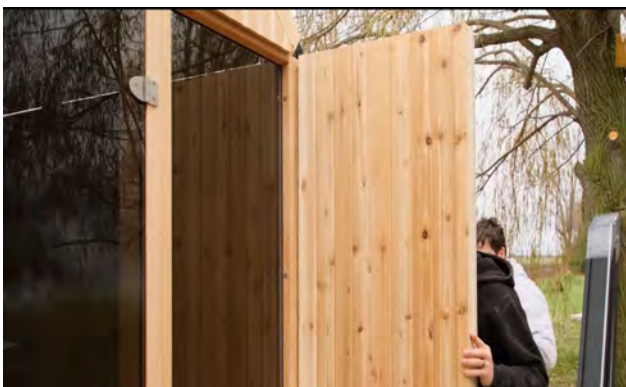
Screw 2- 3 ½" (89mm) screws through the top of each glass panel into the peak panel.



Assemble the remaining 30" (76cm) roof panels in the same process as the other 2 roof panels,



Insert the assembled roof assembly into the slots and secure with 12 - 1 ½" (38mm) screws into each wall panel and 4 - 2 ½" (64mm) screws into the adjacent roof panel.



Place a 25 ¾" (65cm) panel next to the front wall.

Secure with 3 - 3 ½" (89mm) screws into the floor and 7 - 2 ½" (64mm) screws into the other wall panel.

Repeat on opposite side.

Manufactured by:



tel: 888-923-9813 | info@leisurecraft.com | web: www.leisurecraft.com

Hudson

Outdoor Pure Cube Assembly Instructions



Assemble the final roof panels in the same manner as the previous ones, except using the 25 $\frac{3}{4}$ " (65cm) panels.



Insert the assembled roof assembly into the slots and secure with 12 - 1 $\frac{1}{2}$ " (38mm) screws into each wall panel and 4 - 2 $\frac{1}{2}$ " (64mm) screws into the adjacent roof panel.



Place the first peak fascia onto the front of the sauna.



Ensure it sticks up 1 $\frac{1}{4}$ " (32mm) higher than the roof.

Secure it with 4 - 2 $\frac{1}{2}$ " (64mm) screws.

Manufactured by:



tel: 888-923-9813 | info@leisurecraft.com | web: www.leisurecraft.com

Hudson

Outdoor Pure Cube Assembly Instructions



Repeat with the other front roof fascia trim.



Line up the wall trim to the roof fascia and secure with 4 – 2 ½" (64mm) screws.

Repeat on the opposite side of the front of the sauna.

Repeat the above steps for the rear of the sauna.



Install the door handle by placing the provided 2" (50mm) lag screws through the inner handle (short) into the outer handle (longer)

Use the hex key to snug up, do not tighten all the way.



Ensure the outer handle lines up with the magnetic catch on the door frame and then tighten the lag screws completely.

Manufactured by:



tel: 888-923-9813 | info@leisurecraft.com | web: www.leisurecraft.com

Hudson

Outdoor Pure Cube Assembly Instructions

Harvia M3 Wood Stove Installation (Chimney out the back wall) (Optional)

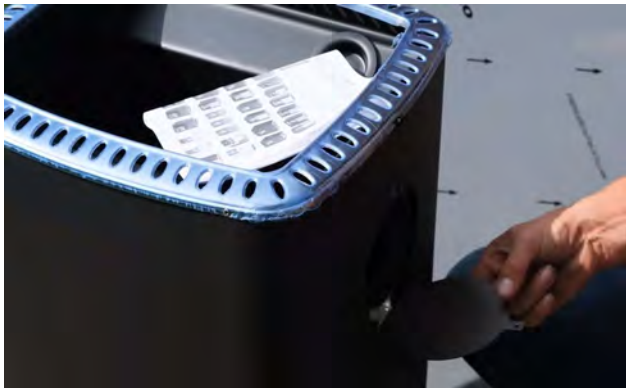


If installing an electric heater, skip this page

Remove all protective film from stainless steel parts and the plastic wrap from stove pipe pieces before installation.



Fasten the stove handle onto the stove door With the screws provided.



Remove the screw on the back of stove and remove the back flap.



Measure the center of the chimney hole, in this case it is 22" (56cm)

Manufactured by:



tel: 888-923-9813 | info@leisurecraft.com | web: www.leisurecraft.com

Hudson

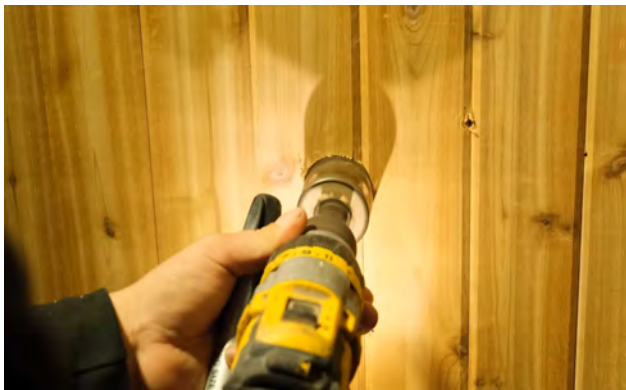
Outdoor Pure Cube Assembly Instructions

Harvia M3 Wood Stove Installation (Chimney out the back wall) (Optional)



If installing an electric heater, skip this page

Measure 12" (30cm) from the front wall and 22" (56cm) up from the floor and mark it on the wall of the side you want the heater installed.



Drill a hole on the mark big enough to fit your jigsaw blade.



Mark 4" (10cm) from the center of the hole in all 4 directions.



Place your chimney on the 4 marks and trace out a circle.

Manufactured by:



tel: 888-923-9813 | info@leisurecraft.com | web: www.leisurecraft.com

Hudson

Outdoor Pure Cube Assembly Instructions

Harvia M3 Wood Stove Installation (Chimney out the back wall) (Optional)



If installing an electric heater, skip this page

Cut out the circle with a jigsaw.



Insert the chimney "T section" through the hole from the outside and then place the heat shield over it.



Secure the heat shield to the wall using 6- 1 ½" (38mm) screws in the provided holes.



Place the floor heat shield centered to the wall shield.

Manufactured by:



tel: 888-923-9813 | info@leisurecraft.com | web: www.leisurecraft.com

Hudson

Outdoor Pure Cube Assembly Instructions

Harvia M3 Wood Stove Installation (Chimney out the back wall) (Optional)



If installing an electric heater, skip this page

Place the stove on the floor shield then slide the chimney stove into the hole on the back of the stove into the opening.



From the outside of the sauna, slide the chimney piece out and then put it through the exterior heat shield and then back into hole in the rear of the stove.



Level the exterior shield and mark on the outer studs where the mounting holes will be.



Remove the shield and chimney and secure the support with 2 - 3 ½" (89mm) screws in each end.

Manufactured by:



tel: 888-923-9813 | info@leisurecraft.com | web: www.leisurecraft.com

Hudson

Outdoor Pure Cube Assembly Instructions

Harvia M3 Wood Stove Installation (Chimney out the back wall) (Optional)



If installing an electric heater, skip this page

Measure the bottom mounting holes on the heat shield in relation to the top holes.



Transfer that measurement to the wall and secure another support in the same manner as the top support.



Place the heat shield and chimney back into position and secure in the corners with 4 of the provided screws.



Start placing the square insulation blocks into the roof panels. The narrower ones will go into the front 2 panels.

Manufactured by:



tel: 888-923-9813 | info@leisurecraft.com | web: www.leisurecraft.com

Hudson

Outdoor Pure Cube Assembly Instructions

Electric Heater Installation (Optional)



If installing a wood heater, skip this page

Measure the width of the stove mounting holes.



Measure the height of the mounting holes and add 6". (152mm)



Transfer these measurements to the outside of the sauna wall where the heater will be placed.

Secure one of the supports into the panel frame on both sides with 2 - 3 ½" (89mm) screws in each end.



Remove the shield and chimney and secure the support with 2 - 3 ½" (89mm) screws in each end.

Manufactured by:



tel: 888-923-9813 | info@leisurecraft.com | web: www.leisurecraft.com

Hudson

Outdoor Pure Cube Assembly Instructions

Electric Heater Installation (Optional)



If installing a wood heater, skip this page

Transfer the measurements to the side wall of sauna where the support was placed in the last step.

Ensure the heater will be centered between the benches.



Hang the heater on the 2 screws and tighten to secure stove in position.



Locate the pieces for your heater guard.

Stand the 2 Assembled side pieces of the heater guard on edge with pre-drilled holes on the bottom.



Screw heater guard support to either side using (2) – 1 ½" (38mm) screws per side.

Repeat for the bottom heater guard support.

Manufactured by:



tel: 888-923-9813 | info@leisurecraft.com | web: www.leisurecraft.com

Hudson

Outdoor Pure Cube Assembly Instructions

Electric Heater Installation (Optional)



If installing a wood heater, skip this page

Place 2- 2 ½" (64mm) screws into the pre-drilled holes on either side of heater guard to prepare for mounting.



Center the guard around the heater and secure to wall with the pre placed screws.

Ensure the guard is level and secure the other side.



Wash the layer of rock dust off of the sauna rocks before using them.

When your sauna is set up and working you should "break-in" the sauna before using it for the first time by turning on the heater to its highest setting and operate it for about 1 hour.

This is recommended to burn off any oils impurities from manufacturing, and it also "cures" the woodwork.

- *All wiring should be installed according to the heater manufacturers instructions and by a licensed electrician.*

- **Do NOT use a G.F.I breaker**

Manufactured by:



tel: 888-923-9813 | info@leisurecraft.com | web: www.leisurecraft.com

Hudson

Outdoor Pure Cube Assembly Instructions



Start placing the square insulation blocks into the roof panels. The narrower ones will go into the front 2 panels.



Use the triangle insulation pieces to fill the gaps between the roof panels and the wall panels.

You will need to cut to fit in between each section.



Repeat the above steps on the other side of the roof.



Start placing the rectangle insulation blocks into the wall panels.

Again the smaller blocks will be for the front 2 panels.

Manufactured by:



tel: 888-923-9813 | info@leisurecraft.com | web: www.leisurecraft.com

Hudson

Outdoor Pure Cube Assembly Instructions



Continue for the rest of the panels on the wall.

Repeat on the other side of the sauna.



Use the triangle insulation pieces to fill the gap at the top of the roof panels.

You will need to cut to fit in between each section.



Add insulation blocks to the open panels on the back wall.

Blocks may be needed to be trimmed to fit.



Now close off the wall panel with the T&G wall staves and secure with finishing nails or 1 ¼" (32mm) staples.

Manufactured by:



tel: 888-923-9813 | info@leisurecraft.com | web: www.leisurecraft.com

Hudson

Outdoor Pure Cube Assembly Instructions



Install the first metal trim piece onto the side fascia on the front of the sauna. Ensure it is flush to the top and secure with 3 of the provided screws in the top middle and bottom supports.

Repeat at the back of the sauna.



Place a side ridge cap between the fascia trim pieces.

You may need to use tin snips to trim this piece to fit.



Secure with the provided screws into each of the wall panel joists.



Place the top fascia trim pieces on the front and back of the same side of the sauna and secure with 3 of the provided screws.

Repeat the above steps for the other side of the sauna.

Manufactured by:



tel: 888-923-9813 | info@leisurecraft.com | web: www.leisurecraft.com

Hudson

Outdoor Pure Cube Assembly Instructions



Install the top ridge cap at the peak of the roof,



Secure with 2 screws on either side at both ends.



Place the first metal shingle on one end of the roof and secure with 3 screws into the top middle and bottom supports.



Ensure the screws are close to the edge to allow for the next metal shingle to slide into place.

Manufactured by:



tel: 888-923-9813 | info@leisurecraft.com | web: www.leisurecraft.com

Hudson

Outdoor Pure Cube Assembly Instructions



Add the next shingle by sliding it into the previous piece and securing with 3 screws.



Continue this process for the remainder of the roof.



Install the bottom trim piece. Use a siding panel to determine the correct height and then secure with 5 screws centered the length of the sauna.



Start placing the siding panels by placing the top of the panel under the side ridge cap and the bottom on top of the bottom trim piece. Secure the panel into the joists with 5 screws ensuring the screws are close to the edge to allow for the next metal siding panel to slide into place.

Manufactured by:



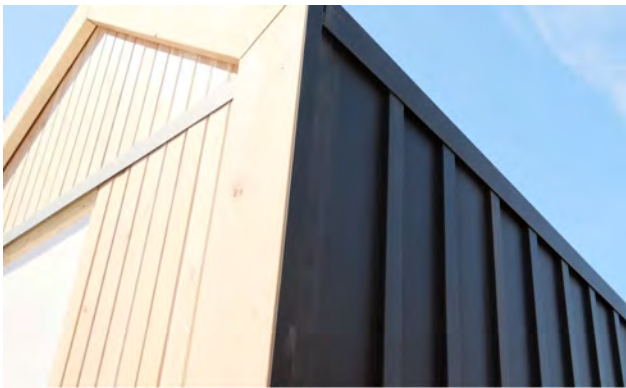
tel: 888-923-9813 | info@leisurecraft.com | web: www.leisurecraft.com

Hudson

Outdoor Pure Cube Assembly Instructions



Continue securing the side wall panels using 3 screws per panel in the top, middle and bottom supports.



Continue this process for the remainder of the side wall of the sauna.

Repeat the process for the roof and the walls on the opposite side of the sauna.

If installing the wood heater you will need to measure and cut out the wall panels for the exterior heat shield.



Assemble together the remaining chimney pieces.



Attach the support strap around the 2 chimney pipes and tighten up.

Manufactured by:



tel: 888-923-9813 | info@leisurecraft.com | web: www.leisurecraft.com

Hudson

Outdoor Pure Cube Assembly Instructions



Attached assemble chimney pieces to the "T" coming out the back of the sauna and secure with a support band.



Mount the chimney support bracket to the top of the wall with the provided screws.



Fasten the bottom of the heat shield with 4 of the provided screws.



Attach the support strap to the chimney support and tighten bolts on both sides.

Install the Chimney cap on top of the Chimney pipes.

Manufactured by:



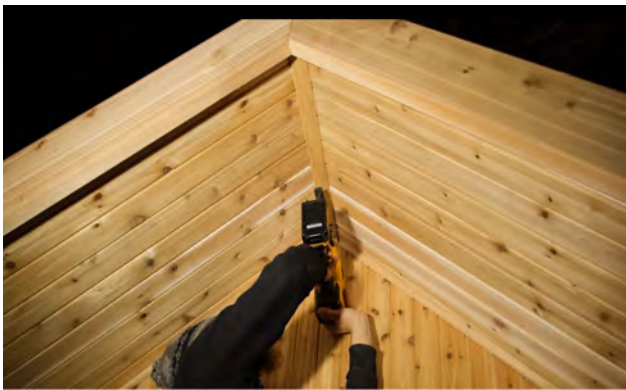
tel: 888-923-9813 | info@leisurecraft.com | web: www.leisurecraft.com

Hudson

Outdoor Pure Cube Assembly Instructions



Install the crown moulding trim with finishing nails or 1 ¼" (32mm) staples on the seams of the sauna where the roof meets the side walls, inside and out of the sauna.




Also install the crown moulding trim with finishing nails or 1 ¼" (32mm) staples on the seams of the sauna where the roof panels meet, inside and out of the sauna.



The assembly of your Hudson Outdoor Pure Cube Sauna is now complete.

It is highly recommended to view the installation video to assist in the proper installation of your Sauna.

View the assembly process 

Manufactured by:



tel: 888-923-9813 | info@leisurecraft.com | web: www.leisurecraft.com

MAINTAINING YOUR SAUNA AFTER INSTALLATION

Interior

It is recommended to vacuum or sweep out the inside of your sauna frequently to remove dirt and other debris.

Under normal conditions, a slight wash of the floor and benches with warm soapy water several times a year will maintain its cleanliness. You can use a sheet of fine grit sandpaper or a low pressure wash to remove more stubborn stains or for a deeper cleaning of the interior of your sauna.

Never use ammonia or harsh cleaners as they can turn the wood gray.

Exterior

Depending on the humidity and weather conditions in your area, the cedar will either shrink or expand based on the amount of moisture absorption. The desired effect is to have the cedar expand into the bands therefore making the sauna staves much tighter.

Over time the lumber will weather naturally as a result of sun and rain, it will change into a weathered grey colour. This natural weathering will not harm the wood or impair the sauna's performance.

If you wish to retain the natural color of your Dundalk Leisurecraft Sauna, there are many cedar stains on the market and almost as many opinions as to which is best.

We encourage you to rely on your own research and referrals.

Recommended Stains Include:

Behr Premium Semi-Transparent Waterproofing Stain & Sealer

Sikkens Proluxe Cetol SRD Translucent Stain

<https://www.realcedar.com/outdoor/finishing-choices/>

Note: never treat the interior of the Sauna, and never apply paint or varnish to the exterior.



Water Seepage

Some minor water seeping into the sauna is expected and normal for an outdoor sauna.

If your sauna is properly installed, you should not have water dripping in but you should expect some water seepage, especially on the top and sides of the sauna.

This is due to the porous characteristics of the wood and to the ball-and-socket profile design of the staves. Water Seepage will not harm the sauna. The moisture will evaporate once you turn on the heater and the sauna heats up.

If the water marks are bothersome, they can be easily removed with a light sanding (80 or 100 grit)



HOW TO TAKE A SAUNA

1. Pre-heat your sauna to the desired temperature (usually between 80-100°C)
2. While it's warming up, take a nice hot shower.
3. Enter the pre-heated sauna, relax and allow your body to perspire in the soft dry heat. Do not throw water on the rocks during the first part of the session.
4. Cool off with a cold shower or a quick swim in a lake or pool.
5. Re-enter the sauna and sprinkle water on the rocks. This will increase humidity to assist in perspiration. Half a cup every 5 minutes should be enough. Too much water will just cool off the rocks and you'll get less steam.
6. After a 20-30 minute sauna, cool off in the shower or lake or pool.
7. Repeat this sauna/cold shower process as often as desired.
8. After each use, leave the door fully open for a few hours if possible so the wood can dry out.

**These are guidelines only. Enjoy your sauna in whichever way you desire.
Children must be supervised by an adult.**

WARRANTY

Dundalk LeisureCraft Inc. warrants our saunas against defects in materials and workmanship under normal/residential use for a period of five (5) years, as applicable, from the date of receipt of the product by the original end-user consumer. This warranty does not apply to normal wear and tear and/or natural weather conditions. This warranty does not cover regular required maintenance of the sauna, (eg. Tightening bands on the barrels, cleaning or staining the sauna) refer to your sauna assembly manual for maintenance guidelines. This warranty does not cover misuse or negligence and the manufacturer and associated retailers are not liable for any injury or damage caused by the product. This warranty is a parts only warranty and any service or labor costs would not be considered as part of the 5 year warranty.

Purchaser Name: _____ Date: _____

Purchased From: _____

Manufactured by:



tel: 888-923-9813 | info@leisurecraft.com | web: www.leisurecraft.com