



# Neptune Outdoor Pure Cube Assembly Instructions



## Requirements:

2 People (recommended)  
Rubber Mallet  
Carpenters Level  
Tape Measure  
Cordless Drill  
Phillips & Robertson Drill Bits  
2" hole Saw

Staple Gun  
Hammer  
Step Ladder  
Utility Knife  
Chisel  
4mm Hex Bit  
Jig Saw & Circular Saw

**It is highly recommended to view the assembly video prior to starting assembly!**

**[Click here to View the assembly process or scan the QR code.](#)**





# Neptune Outdoor Pure Cube Assembly Instructions

**Please read this entire manual before proceeding with the assembly.**

**Congratulations on the purchase of your Leisurecraft Pure Cube sauna.**

Leisurecraft Pure Cube saunas are available with various options. This manual is designed for these options, and every attempt has been made to make the installation information as clear as possible.

**All electrical connections must be performed by a qualified licenced electrician!**

For further information on your heater and installation instructions, please refer to the provided heater manual.

Always ensure that you have the correct screw length so that there will be enough thread to hold, and especially, so that the screw does not go all the way through the material and come out the other side.

When fastening screws where there are no predrilled holes, It is recommended to predrill a hole before inserting the screw to prevent the cedar from splitting or cracking

**Thank you for choosing Leisurecraft!**



# Neptune Outdoor Pure Cube Assembly Instructions

## Index

Base Preparation

Base Assembly

Wall Assembly

Front Window Installation

Roof Assembly

Metal Siding & Trim Installation

Wood Siding & Trim Installation

Bench Assembly

Side Wall Bench Assembly (Electric Heater Only)

Inside Trim Installation

Vent Kit Installation

Care & Maintenance

Warranty



# Neptune Outdoor Pure Cube Assembly Instructions

## Sauna Base Preparation

Ensure the base for your sauna is level with a slight slope to the back for drainage.

A solid base for your sauna is recommended and can be made from the following.



**Concrete Pad**



**Wood Deck**



**Crushed Stone**



**Patio Stone/Paver Blocks**

It is recommended to build a base larger than required to provide a sitting area for cooling off during your sauna session.

# Neptune

## Outdoor Pure Cube Assembly Instructions

### Base Assembly



Start the assembly of your Neptune Sauna by locating the front and back floor joists.

The front and back joists are the shorter ones with the notch facing upwards.



Locate the middle floor joists.

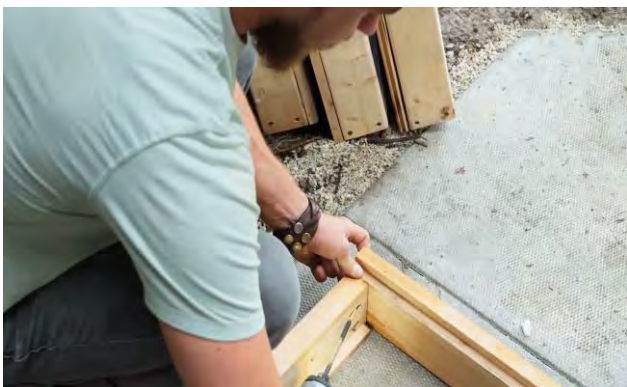
These will be the longer joists.

The 2 for the outside and the 2 for the middle will have the insulation support on 1 side and the remaining 2 will have the insulation supports on both sides.



Place the 2 outside joists with the insulation supports facing inwards.

Roughly center the 4 middle joists between the outside joists.



Secure the outside joists to the front and back joists using 2 - 1 1/2" (38mm) screws per corner.

Repeat on all 4 corners.



# Neptune Outdoor Pure Cube Assembly Instructions

## Base Assembly

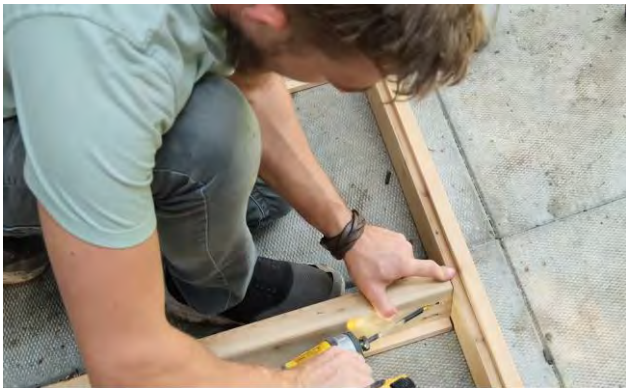


To get the spacing for the middle floor joists, measure the width of the insulation.

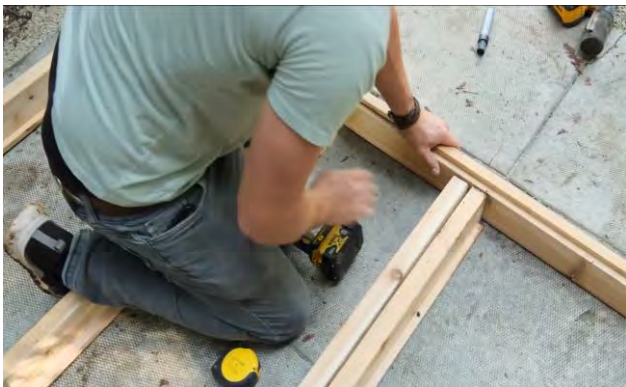
In this case, it will be 19" (48cm).



Transfer this measurement to get the spacing for the first floor joist.



Secure the floor joist to the joist using 2 – 1 ½" (38mm) screws in the pre-drilled holes.



Space out the next floor joists.

These will be the center floor joists and will be 2 joists back to back.

Ensure the insulation supports are facing inwards to each side and secure with 2 – 1 ½" screws in the pre-drilled holes.

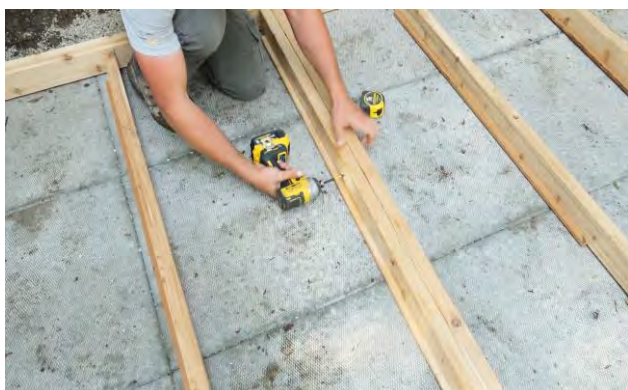
# Neptune

## Outdoor Pure Cube Assembly Instructions

### Base Assembly



Space out the last floor joist and secure in the same manner as the previous joists.



Secure the 2 middle floor joists together using 4 – 2 ½" (64mm) screws spaced out evenly from front to back.



Fasten the floor joists to the back joist using 1 ½" (38mm) screws in the pre-drilled holes ensuring they are the same spacing as the front joist.



Place the blocks of foam insulation in between the joists.

You may need to trim off the end for a proper fit.



# Neptune Outdoor Pure Cube Assembly Instructions

## Base Assembly



Secure a floorboard across the joists and secure with a 1 ½" (38mm) screw into each joist.

This is temporary to ensure the joists do not bow while placing the remaining floorboards and will be removed later.



Begin placing the floorboards.

Ensure they are flush with the outside edge of the side joists and inside notch of the front joist.

Ensure the tongues are tight into the grooves and secure with 1 - 1 ½" (38mm) screw on the outside joists only.



For extra support, Secure every third floorboard to the inside floor joists with staples or finishing nails as well.



When you get to the middle of the floor, remove the temporary floorboard that was placed earlier.



# Neptune Outdoor Pure Cube Assembly Instructions

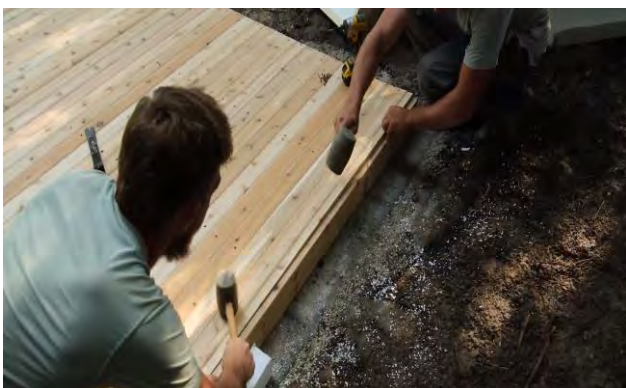
## Base Assembly



Once you get to 48" (122cm) from the rear of the sauna, place a screw in the floorboards where each of the joists are as they will be hidden by the benches.



Secure the floorboards from this point to each floor joist with a 1 ½" (38mm) screw.



Do not fasten the last 3 floorboards to make it easier as you place the last smaller floorboard in to finish.

You may use a rubber mallet to tap it into place.

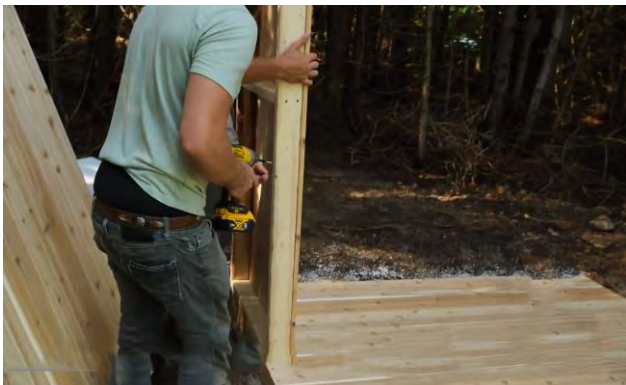


Once the last floorboard is in the proper placement, secure each of the unscrewed floorboards with a 1 ½" (38mm) screw into each joist.

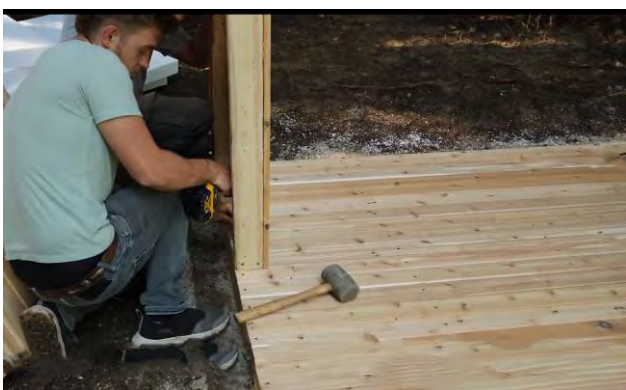
# Neptune

## Outdoor Pure Cube Assembly Instructions

### Wall Assembly



To start the assembly of the walls, bring a wide panel and place it on the back corner on the side of the sauna.



Ensure it is flush to the edge of the floor and secure with 3 – 3 ½" (89mm) screws into the outside floor joist.



Place a narrow wall panel onto the back of the sauna and ensure it is flush to the base and the side wall panel.



Ensure it is flush to the back edge of the floor and secure with 2 – 3 ½" (89mm) screws into the back floor joist and 4 – 2 ½" (64mm) screws into the other wall panel.



# Neptune

## Outdoor Pure Cube Assembly Instructions

### Wall Assembly



Repeat the process for 2 more narrow panels on the back wall ensuring they are flush to the back of the floor and to the previous panel.



Place a wide panel onto the other side of the sauna.

Ensure it is flush to the edge of the floor and secure with 3 - 3 ½" (89mm) screws into the outside floor joist and 4 - 2 ½" (64mm) screws into the back wall panel.



Repeat with another wide panel securing it to the floor and the previous wall panel.



Repeat with 2 more narrow panels to finish the side wall ensuring the panels are flush to the edge of the floor securing with 2 - 3 ½" (89mm) screws into the outer floor joist and 4 - 2 ½" (64mm) screws into the previous wall panel.



# Neptune

## Outdoor Pure Cube Assembly Instructions

### Wall Assembly



At this point, you will have the floor, the side and back wall on one side and the wide panel on the opposite wall installed.



Place a wide panel onto the other side of the sauna.

Ensure it is flush to the edge of the floor and secure with 3 - 3 ½" (89mm) screws into the outside floor joist and 4 - 2 ½" (64mm) screws into the first wall panel.



Place the door panel.

Ensure it is flush on the inside and the hinges are on the outside.

Secure with 4 - 2 ½" (64mm) screws through the previous wall panel into the door panel.



Install the last narrow next to the door and secure to the door panel with 4 - 2 ½" (64mm) screws.

# Neptune Outdoor Pure Cube Assembly Instructions

## Front Window Installation



**WARNING:** The Front Glass Panel is Heavy.

Use the Provided Panel Handling lifting devices and ensure you have at least to people to carry the panel!



Locate the wall panel handling rigger set.

This will include 2 aluminum lifting riggers and 2 pieces of 2" (51mm) dowel.



Install the panel rigger bracket onto the bottom sides of the window panel with the provided screws.

The lip of the panel rigger should be tight to the bottom side of the panel.



Slide the dowel through the hole in the rigger so it is even on both sides.



# Neptune Outdoor Pure Cube Assembly Instructions

## Front Window Installation



Carefully carry the glass panel to the front of the sauna.



When you get the glass panel close to the front wall you can remove the riggers.



Insert the front window panel and ensure it is flush to the front of the floor and the side wall panels.



Use a rubber mallet to finesse window until it is flush by tapping on the wood of the panel. (if needed)



# Neptune Outdoor Pure Cube Assembly Instructions

## Front Window Installation



Use a 5/32" drill bit to predrill holes into the wall panels.



Secure the glass panel to the side wall panel with the provided lag screws ensuring the glass panel is flush.



Repeat on the opposite side.



Once the front window is installed, secure the narrow panel on either side of the glass panel with 2 - 3 1/2" (89mm) screws to the outside floor joists.

# Neptune Outdoor Pure Cube Assembly Instructions

## Front Window Installation



secure the front glass panel with 4 - 2 ½" (64mm) screws to the front floor joist.

# Neptune Outdoor Pure Cube Assembly Instructions

## Roof Assembly



Slide the first roof panel onto the top of the sauna ensuring it is flush to the front and side panels.

Ensure the wider end is to the front of the sauna.



Use a 5/32" drill bit to predrill 2 holes from the glass panel into the roof panel.

Secure with 3 1/2" (89mm) screws.



Repeat for the side wall panels ensuring the roof panel is flush to the side walls.



Repeat the above steps for the 2<sup>nd</sup> roof panel.

Ensure the insulation blocks are already installed in the roof panels



# Neptune Outdoor Pure Cube Assembly Instructions

## Roof Assembly



Place the first sheet of plywood onto the roof of the sauna.



Ensure the plywood is flush to the front and sides of the sauna and secure with 1 ¼" (32mm) screws or staples.



Repeat for the second sheet of plywood.



Repeat for the last smaller sheet of plywood.

You may need to trim off the end of the small sheet if it is not flush to the roof panel.

# Neptune

## Outdoor Pure Cube Assembly Instructions

### Roof Assembly



On the back wall of the sauna, locate the location of the studs in the roof panels by where the screws are.

Secure the back wall panels to the studs with 3 ½" (89mm) screws.



Place one of the top side nosing pieces



Ensure it is flush at the front and 1" above the bottom of the top wall panel stud.



Secure the nosing to the roof panels with 9 - 2 ½" (64mm) screws.



# Neptune

## Outdoor Pure Cube Assembly Instructions

### Roof Assembly



Repeat with the front nosing piece ensuring it is flush to the edge of the side nosing.

Secure the front nosing with 7 - 2 ½" (64mm) screws.

Repeat for the opposite side nosing piece.



Spread the rubber membrane out evenly over the roof of the sauna allowing it to drape over the sides.



Staple the membrane to the front and side nosings pulling it tight as you staple.

At the back of the sauna pull the membrane tight and secure with staples to the underside of the wall panels.



Cut off the excess membrane even with the nosing pieces and adding more staples as needed to get a tight fit.

**\*If metal siding option is selected, continue to next page, If wooden siding option is chosen, please skip to page 26**

# Neptune Outdoor Pure Cube Assembly Instructions

## Metal Siding & Trim Installation



Start placing the insulation blocks into the wall panels.



To start the installation of the metal trim, place the front metal trim piece over the front nosing.



Fasten the trim to the nosing using 9 of the provided black screws.

For a cleaner look, place the screws on the top and bottom edges of the metal trim as in picture.



Place a side metal trim piece over the side nosing and secure with 6 black screws on the top and 3 centered on the bottom of the metal trim.

Repeat on opposite side.



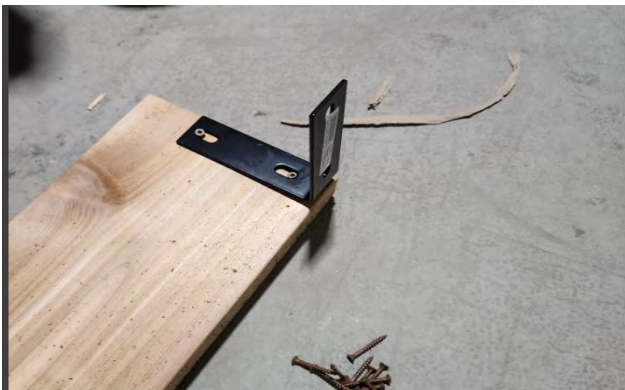
# Neptune

## Outdoor Pure Cube Assembly Instructions

### Metal Siding & Trim Installation



Place one black screw on the face of each side trim piece to tighten the seam with the front trim.



Locate the back wood trim piece, the metal trim with bent edges, the 2 L-brackets and hardware to start the installation of the back trim kit.

Secure a bracket to the end of the wood trim using 1 ½" (38mm) screws ensuring the bracket is flush to the top and edge of the trim. Repeat on opposite end.



Cut out the fold over on the top of the metal trim on both ends.



This will leave the side and bottom to be able to slide into the side trim of the sauna.

# Neptune

## Outdoor Pure Cube Assembly Instructions

### Metal Siding & Trim Installation

Place the wood trim with the brackets to the top into the metal trim piece.



Place the assembly onto the back of the sauna sliding the sides and bottom under the side trim on both sides.



Slide the trim assembly in until you have a ½" (13mm) gap between the assembly and the membrane on the back of the sauna.



Secure the brackets to the side trim with 2 of the provided black roofing screws on each end.





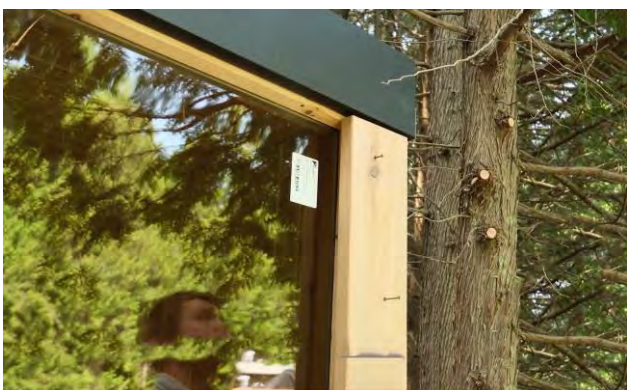
# Neptune

## Outdoor Pure Cube Assembly Instructions

### Metal Siding & Trim Installation



Secure the metal trim to the back trim piece with 5 black screws evenly spaced along the top of the back trim.



Place the first wood front trim piece on one side of the sauna front wall tight to the metal front trim.

Ensure there is a 1" (25mm) overhang to the outside and secure with 7 - 2 ½" (64mm) screws.

Repeat on opposite side.



Place a front metal trim piece over the wood trim piece and secure with 6 of the provided black screws. (3 on each side of the metal trim)

Repeat on opposite side,



Repeat the process for the trim at the back of the sauna only securing with screws on the outside edges of trim at this point.

# Neptune Outdoor Pure Cube Assembly Instructions

## Metal Siding & Trim Installation

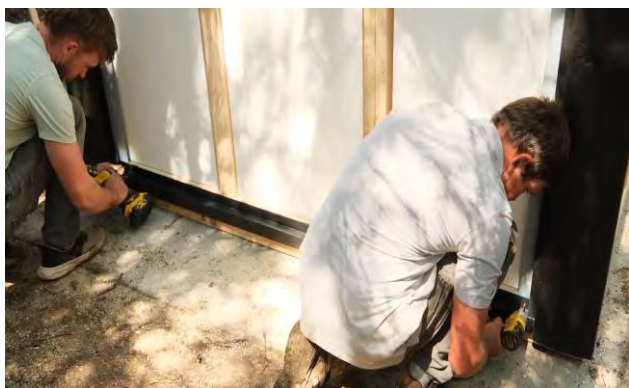


Starting at the back of the sauna, Place a top “J” piece between the 2 trim pieces and secure with 4 of the provided black screws.



Place the side “J” piece next to the side trim and secure with 3 of the provided screws.

Repeat on opposite side of back wall.



Install the bottom trim piece ensuring it is snug between the 2 side “J” trim pieces securing with 4 of the provided screws.

You can use a piece of the metal siding to help get the correct location of the bottom trim.



Place the first piece of metal siding by sliding it into the “J” side piece and then securing with 3 of the provided screws, 1 at the top, middle and bottom.



# Neptune Outdoor Pure Cube Assembly Instructions

## Metal Siding & Trim Installation



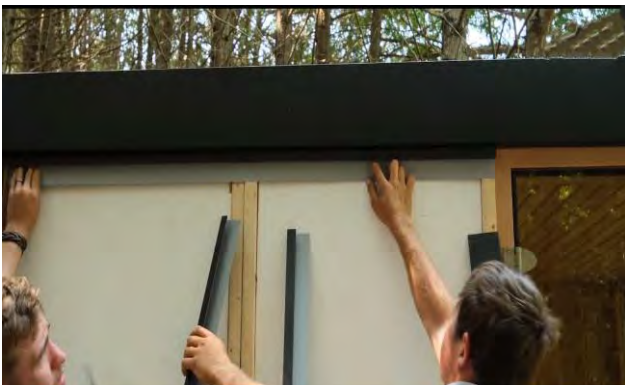
Install the next piece of metal siding, hooking it into the previous siding piece and secure with 3 of the provided screws.



Repeat this process for the remaining back wall siding pieces.



When you reach the other side of the back wall, use the thin siding piece to complete.



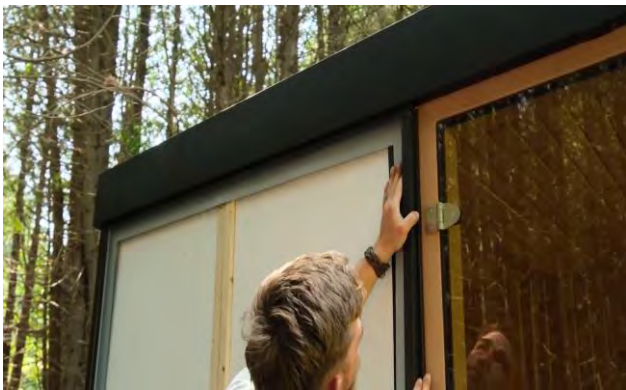
On the door side of the sauna, Place a top "J" piece between the trim piece and the door and secure with 3 of the provided black screws.

# Neptune Outdoor Pure Cube Assembly Instructions

## Metal Siding & Trim Installation



Place the side "J" piece next to the back trim and secure with 3 of the provided screws.



Place a trim piece with the small lip next to the door panel and a side "J" piece on top and secure with 4 of the provided screws.



Install the bottom trim piece ensuring it is snug between the side "J" trim pieces securing with 3 of the provided screws.

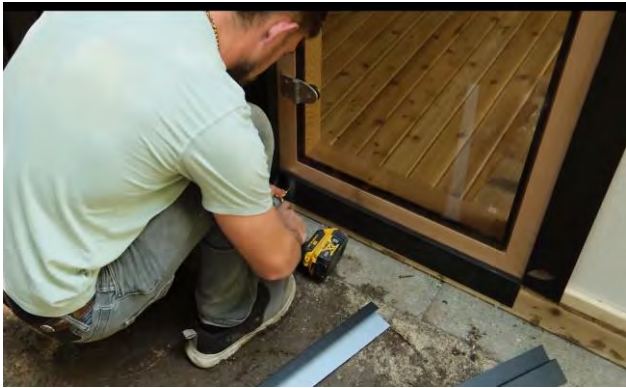


Follow the same process as the back wall for installing the metal siding pieces up to the door.



# Neptune Outdoor Pure Cube Assembly Instructions

## Metal Siding & Trim Installation



Place a short trim piece with the small lip below the door panel and secure with 3 of the provided screws.

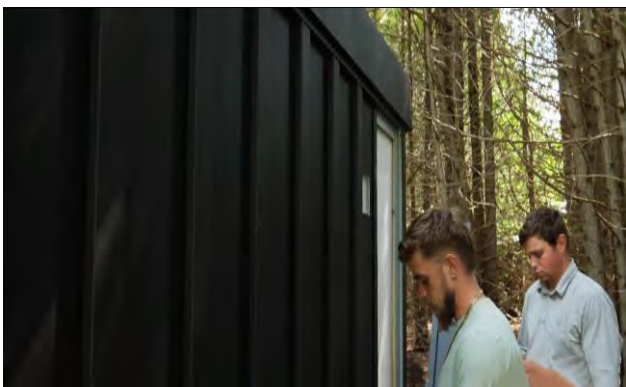


On the wall on the other side of the door, install the "J" trim and bottom pieces in the same manner as the previous walls.



Install the first piece of siding using the same process as in previous steps.

Secure the metal siding with the vent hole cut out on the bottom and then secure the last piece of metal siding in the same manner to finish this wall.



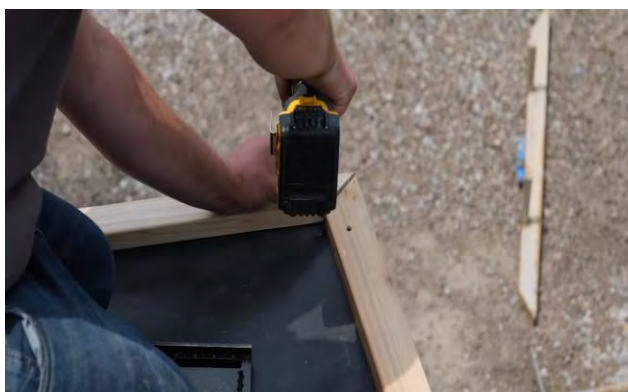
Repeat for the opposite side wall of the sauna.

Ensure the 2<sup>nd</sup> last full piece of metal siding has the vent hole cut out towards the top.

# Neptune Outdoor Pure Cube Assembly Instructions

## Wood Siding & Trim Installation

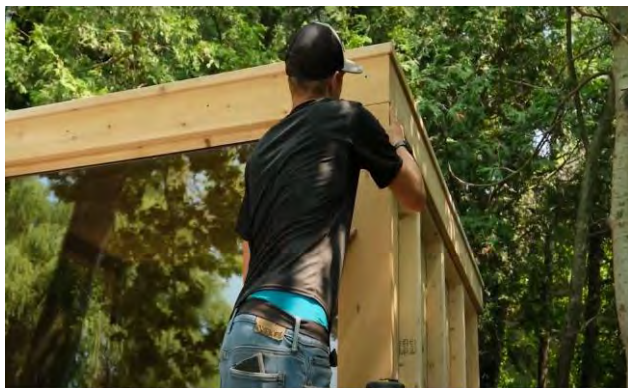
[Click here to View the assembly process or scan the QR code.](#)



Place the roof trim pieces on top of the nosing.

The front has a 45° angle on both ends and the pieces with 1 angle and a flat end are for the sides.

Ensure the corners are flush to each other and secure each piece to the nosing with 6 - 2 ½" (64mm) screws.



Place a wood trim piece on one side of the sauna front wall ensuring it is flush with the nosing.

Secure with 7 - 2 ½" (64mm) screws.

Repeat on opposite side.



Repeat on the back of the sauna.



# Neptune Outdoor Pure Cube Assembly Instructions

## Wood Siding & Trim Installation



Place the insulation blocks into the wall panels.



Begin placing the wooden siding pieces on the door side of the sauna.

Pre-drill 1/8" holes through the tongue of the boards and secure with 1 1/2" (38mm) screws into the top, middle and bottom wall studs.



Ensure the grooves are tight into the tongues of the previous panel.

Continue placing and securing the siding boards until you reach the side of the door.



Locate the small finisher piece.

Ensure the groove is tight into the tongue of the previous panel and secure with 1 1/4" staples or finishing nails.

# Neptune Outdoor Pure Cube Assembly Instructions

## Wood Siding & Trim Installation



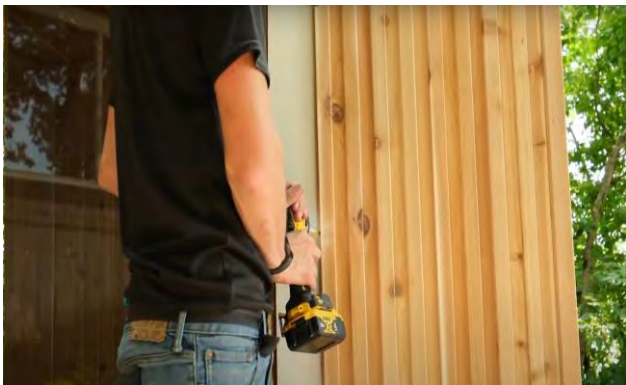
Locate one of the trim pieces.



Place the trim piece over the small finisher piece and secure with 1 ¼" staples or finishing nails.



Secure the siding boards on the wall panel on the other side of the door starting at the front of the sauna in the using the same process as the previous steps.



Only put in the middle screw for the 3<sup>rd</sup> and 4<sup>th</sup> board as they will be coming back off in the upcoming steps.



# Neptune Outdoor Pure Cube Assembly Instructions

## Wood Siding & Trim Installation



On the 3<sup>rd</sup> & 4<sup>th</sup> board, measure 8" (20cm) from the bottom.



Place the vent cover on the line centered between the 3<sup>rd</sup> & 4<sup>th</sup> boards.

Ensure it is level and trace the base of the vent cover.



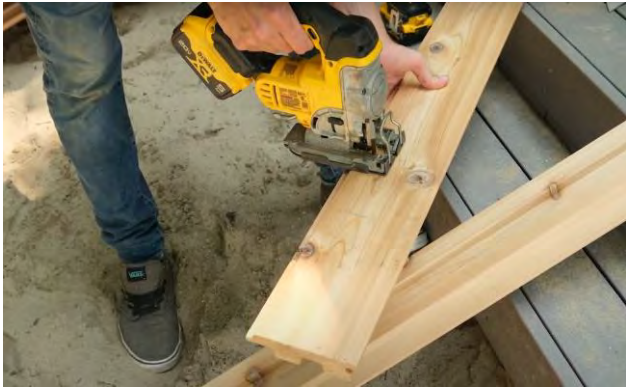
Remove the 3<sup>rd</sup> & 4<sup>th</sup> boards.



To make it easier for cutting, transfer the measurements from the front of the boards to the back side.

# Neptune Outdoor Pure Cube Assembly Instructions

## Wood Siding & Trim Installation



Use a saw to cut out the marks on the back.



Stick the 2 panels together so they are tight.



Place the vent cover in the opening and trace out the top of the cover.



Use a saw and a chisel to cut out the ribbed part of the board so it allows the vent cover to sit flush.



# Neptune Outdoor Pure Cube Assembly Instructions

## Wood Siding & Trim Installation



Use 1 screw in the middle again to temporarily place the 2 boards back on the wall.

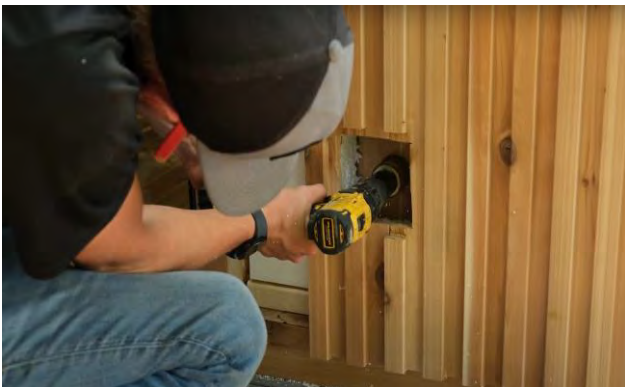
Use a pencil or the vent cover to mark the insulation block.



Remove the 3<sup>rd</sup> & 4<sup>th</sup> boards and cut out a hole slightly larger the mark you traced.



Install the 2 boards by pre-drilling 1/8" holes through the tongue of the boards and secure with 1 1/2" (38mm) screws into the top, middle and bottom wall studs.



Drill a 2" (51mm) hole in the center of the cut out.

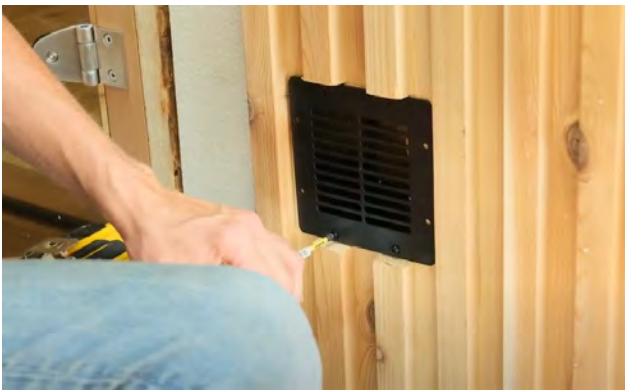
Only drill have way to prevent splintering on the inside of the sauna.

# Neptune Outdoor Pure Cube Assembly Instructions

## Wood Siding & Trim Installation



Finish drilling the hole from the inside for a cleaner look.



Install the vent and secure with the provided screws.



Install the last full size siding board for this side of the sauna.



Locate the small finisher piece.

Ensure the tongue is tight into the groove of the previous panel and secure with 1 ¼" staples or finishing nails.



# Neptune Outdoor Pure Cube Assembly Instructions

## Wood Siding & Trim Installation



Place the trim piece over the small finisher piece and secure with 1 ¼" staples or finishing nails.



Repeat the process with the siding on the other side of the sauna starting at the front, except the vent hole will go 8 ½" (22cm) down from the top of the 3<sup>rd</sup> & 4<sup>th</sup> last panels.



The final siding board will be a thinner piece.

It may be easier to get this piece to fit by loosening the back trim piece a little bit.

Secure the last piece with 1 ¼" staples or finishing nails for a cleaner look.



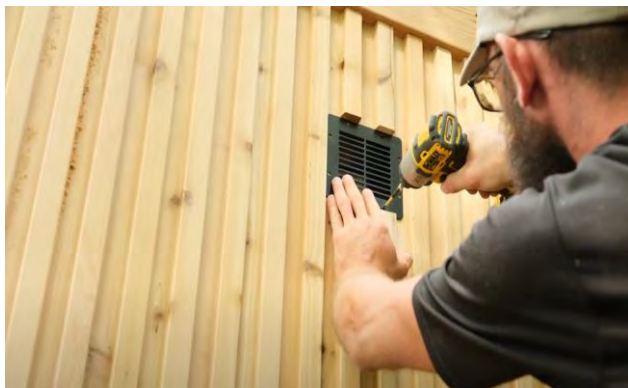
Drill a 2" (51 mm) hole in the center of the vent cut out.

Only drill have way to prevent splintering on the inside of the sauna.

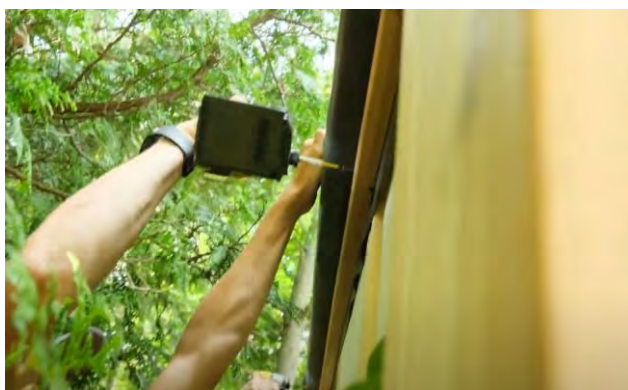
Finish drilling the hole from the inside for a cleaner look.

# Neptune Outdoor Pure Cube Assembly Instructions

## Wood Siding & Trim Installation



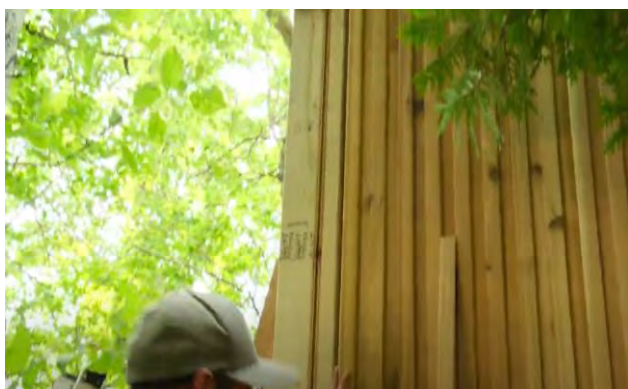
Install the vent and secure with the provided screws.



Place the back top trim piece snugly up against the bottom of the roof panel and secure it to the wall with 4 – 2 ½" (64mm) screws.



Install the siding boards for the back of the sauna by pre-drilling 1/8" holes through the tongue of the boards and securing them with 1 ½" (38mm) screws into the top trim and the middle and bottom wall studs.



To make the last boards easier to install, you can remove the corner trim.



# Neptune Outdoor Pure Cube Assembly Instructions

## Wood Siding & Trim Installation



Place the small finisher piece and secure with 1 ¼" staples or finishing nails for a cleaner look.

Reinstall the back corner trim.



Place the brackets on the rear nosing.

Ensure there is 1 1" (25mm) overhang and secure the brackets with 2 - ¼" hex bolts.

Repeat on the other end.



Place the rear nosing on top of the roof trim.

Ensure there is ½" gap on each side.

Secure the brackets to the roof trim with 2 - ¼" hex bolts.

Repeat on the other end.



Center the bottom vent support under the top hole, ensure it is level and secure it with 3 - 1 ½" (38mm) screws

# Neptune Outdoor Pure Cube Assembly Instructions

## Wood Siding & Trim Installation



Place the cedar slider cover onto the bottom support then put the top vent support on top, ensure that the cover can slide back and forth.

Secure with 3 - 1 ½" (38mm) screws.



Repeat the process to install the other cedar slide cover.



Install the door handle by placing the provided 2" (50mm) lag bolts through the inner handle (short) into the outer handle (longer)

Use the hex key to snug up, do not tighten all the way.



Ensure the outer handle lines up with the magnetic catch on the door frame and then tighten the lag bolts completely.



# Neptune

## Outdoor Pure Cube Assembly Instructions

### Bench Assembly



To start the assembly of the benches, bring in the large top bench and place it against the back wall ensuring the curved front of the bench is facing upwards.



Place one of the bench supports flush to the back of the bench with the bottom seat facing up and secure the support to the bench with 2 - 2 ½" (64mm) screws per support.



Repeat with the remaining supports.



Repeat with the lower bench ensuring the curved front of the bench is facing upwards.

Secure the support to the bench with 2 - 2 ½" (64mm) screws per support ensuring the support is square to the bench.

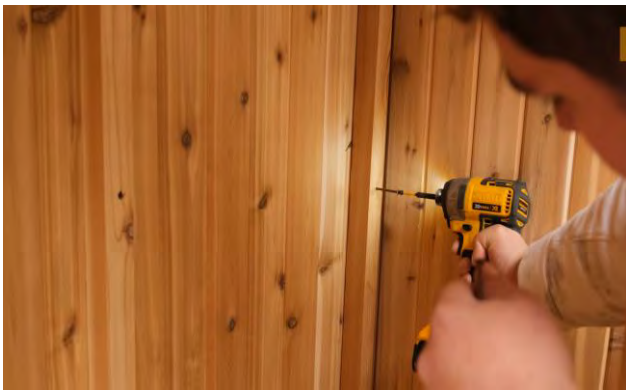
# Neptune

## Outdoor Pure Cube Assembly Instructions

### Bench Assembly



Flip the bench upright and place it tight against the back wall of the sauna.



Ensure the bench is tight to the back wall then secure with 2 - 2 ½" (64mm) screws in the back support and 2 - 2 ½" (64mm) screws in the floor support on each bracket.



Place the large backrest 10" (25cm) to the bottom of the 2<sup>nd</sup> slat above the bench and secure with 2 ½" (64mm) screws into each support.

Screw between the slats of the support to hide the screws.



If installing a floor model electric heater, skip this step until the heater controls are completed.

Place the upper bench enclosure in place and secure with 2 - 1 ½" (38mm) screws into each support.

Repeat for bottom enclosure.

Screw between the slats of the support to make the screws less visible.



# Neptune

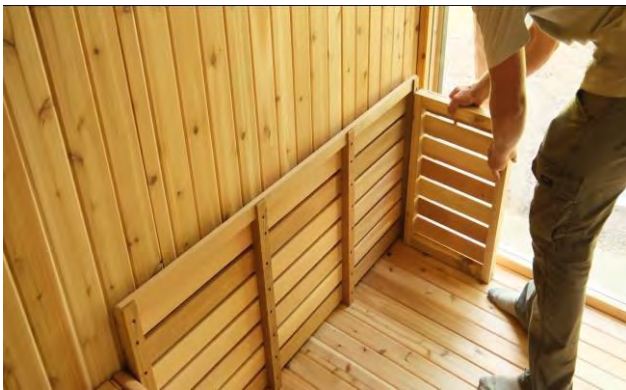
## Outdoor Pure Cube Assembly Instructions

### Side Wall Bench Assembly (Electric Heater Only)



If a wood heater is ordered, you can skip this section.

Place the side wall bench against the side wall ensuring the curved front of the bench is facing upwards.

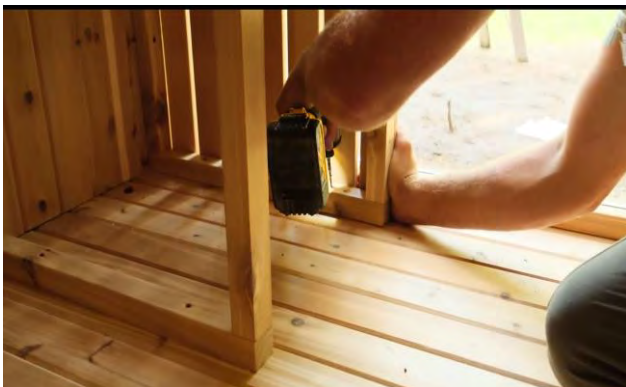


Secure the slotted bench support to the bench seat with 2 - 2 ½" (64mm) screws.

Repeat for the 3 remaining bench supports.



Flip the bench upright and place it tight against the side wall of the sauna.



Ensure the bench is tight to the side wall then secure with 2 - 2 ½" (64mm) screws in the back support and 2 - 2 ½" (64mm) screws in the floor support on each bracket.

# Neptune

## Outdoor Pure Cube Assembly Instructions

### Side Wall Bench Assembly (Electric Heater Only)



Place the side wall bench enclosure in place and secure with 2 - 1 ½" (38mm) screws into each support.

Screw between the slats of the enclosure to make the screws less visible.



Place the side wall backrest 10" (25cm) to the bottom of the 2<sup>nd</sup> slat above the bench and secure with 2 ½" (64mm) screws into each support.

Screw between the slats of the support to hide the screws.



# Neptune

## Outdoor Pure Cube Assembly Instructions

### Inside Trim Installation



Measure the distance between the side walls at the seam above the glass wall and the roof.

Transfer this measurement to a piece of the inside corner trim and cut.



Secure the corner trim with 1 ¼" (32mm) staples or finishing nails.

Repeat for the back wall.



Use a full piece of the corner trim for the side wall.

Measure the distance remaining and cut accordingly.

Repeat on opposite side wall.



Repeat the above steps for the corners on the front wall.

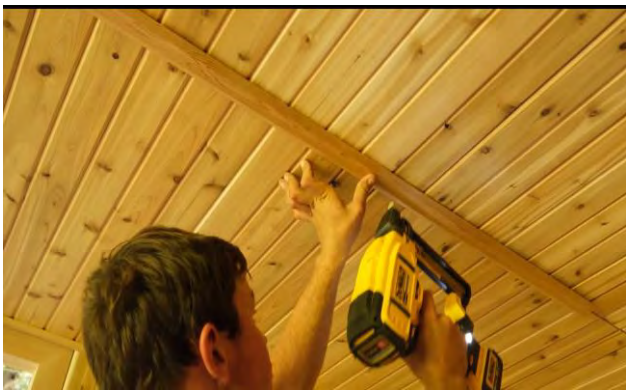
# Neptune Outdoor Pure Cube Assembly Instructions

## Inside Trim Installation



Measure the distance between the roof and the top of the backrest and from the backrest to the bench.

Cut accordingly and secure with staples or finishing nails.



Install the crown molding over the seam between the 2 roof panels.



Measure the remaining gap and cut a piece to fit.

Secure it with staples or finishing nails.



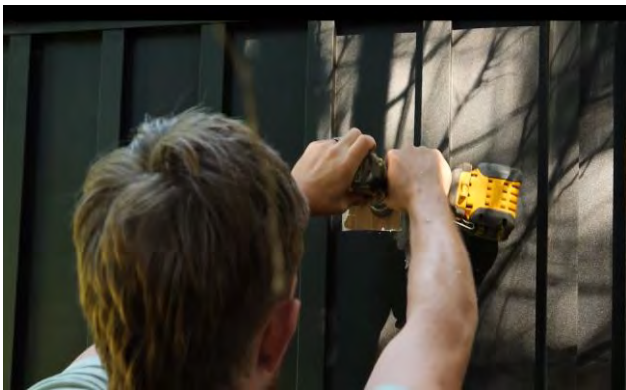
# Neptune Outdoor Pure Cube Assembly Instructions

## Vent Installation



*If the wood siding option was chosen, you can skip this step.*

Using a utility knife, remove the insulation from the upper vent hole.

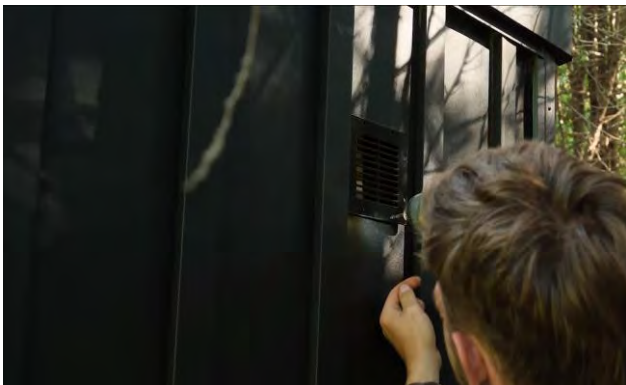


Drill a 2" (51mm) hole in the center of the cut out.

Only drill have way to prevent splintering on the inside of the sauna.



Finish drilling the hole from the inside for a cleaner look.



Install the vent and secure with the provided screws.

# Neptune Outdoor Pure Cube Assembly Instructions

## Vent Installation



Center the bottom vent support under the hole, ensure it is level and secure it with 3 - 1 ½" (38mm) screws



Place the cedar slider cover onto the bottom support then put the top vent support on top, ensure that the cover can slide back and forth.

Secure with 3 - 1 ½" (38mm) screws.



Repeat the process for removing the insulation and installing the vent for the lower vent hole.



Repeat the process to install the cedar slide cover.



## MAINTAINING YOUR SAUNA AFTER INSTALLATION

### Interior

It is recommended to vacuum or sweep out the inside of your sauna frequently to remove dirt and other debris. Under normal conditions, a slight wash of the floor and benches with warm soapy water several times a year will maintain its cleanliness. Leisurecraft offers a sauna room cleaner that can be used pure or diluted at a 4-1 ratio. Simply spray and wipe!

You can use a sheet of fine grit sandpaper or a low-pressure wash to remove more stubborn stains or for a deeper cleaning of the interior of your sauna.

**Never use ammonia or harsh cleaners as they can turn the wood gray.**



### Water Seepage

Some minor water seeping into the sauna is expected and normal for an outdoor sauna. If your sauna is properly installed, you should not have water dripping in, but you should expect some water seepage, especially on the top and sides of the sauna. This is due to the porous characteristics of the wood and to the ball-and-socket profile design of the staves.

Water Seepage will not harm the sauna. The moisture will evaporate once you turn on the heater and the sauna heats up.

If the water marks are bothersome, they can be easily removed with a light sanding (80 or 100 grit)

**Exterior**

Depending on the humidity and weather conditions in your area, the cedar will either shrink or expand based on the amount of moisture absorption. The desired effect is to have the cedar expand into the bands therefore making the sauna staves much tighter. Over time the lumber will weather naturally as a result of sun and rain, it will change into a weathered grey colour. This natural weathering will not harm the wood or impair the sauna's performance.

If you wish to retain the natural color of your Leisurecraft Sauna, Leisurecraft offers cedar sauna stains in 4 amazing colors, Espresso, Limestone Trail, Onyx Gem and Pickled White in convenient 1-gallon pails.

**Never treat the interior of the Sauna,**



**Espresso**



**Limestone Trail**



**Onyx Gem**



**Pickled White**



## WARRANTY

LeisureCraft warrants our saunas against defects in materials and workmanship under normal/residential use for a period of five (5) years, as applicable, from the date of receipt of the product by the original end-user consumer. This warranty does not apply to normal wear and tear and/or natural weather conditions. This warranty does not cover regular required maintenance of the sauna, (eg. Tightening bands on the barrels, cleaning or staining the sauna) refer to your sauna assembly manual for maintenance guidelines. This warranty does not cover misuse or negligence and the manufacturer, and associated retailers are not liable for any injury or damage caused by the product. This warranty is a parts only warranty and any service or labor costs would not be considered as part of the 5-year warranty.

Purchaser Name: \_\_\_\_\_ Date: \_\_\_\_\_

Purchased From: \_\_\_\_\_